

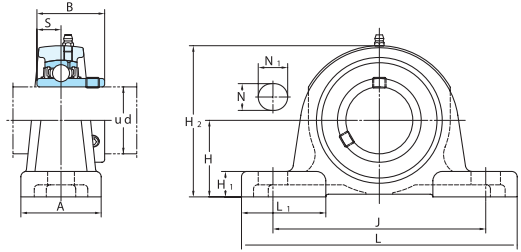
Tablas de dimensiones de Chumaceras



Koyo®

Tipo Puente

UCP
Agujero cilíndrico (con tornillo fijador)
d 12 ~ (45) mm



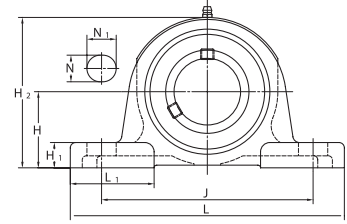
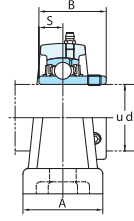
| Diámetro Eje mm pulg d | Dimensiones pulg. mm | | | | | | | | | | | | | | Perno pulg. mm | Estándar | | | Capacidad Carga Básica kN | | Factor |
|------------------------------|----------------------------|------|-------|-------|-----|----------------|----------------|----------------|----------------|-------|-------|------------|-----------------|-------------|----------------------|------------|----------------|-----------------|------------------------------|--|--------|
| | H | L | A | J | N | N ₁ | H ₁ | H ₂ | L ₁ | B | S | No. Unidad | No. Alojamiento | No. Inserto | | Masa kg | C _r | C _{or} | f ₀ | | |
| 12 | 1 3/16 | 5 | 1 1/2 | 3 3/4 | 1/2 | 23/32 | 15/32 | 2 3/8 | 1 1/2 | 1.220 | 0.500 | 3/8 | UCP201 | | UC201 | 0.63 | | | | | |
| 15 | 5/8 | 30.2 | 127 | 38 | 95 | 13 | 18 | 12 | 60 | 38 | 31 | 12.7 | UCP201-8 | P203 | UC201-8 | 0.63 | 12.8 | 6.65 | 13.2 | | |
| 17 | | | | | | | | | | | | | UCP202 | | UC202 | 0.61 | | | | | |
| | | | | | | | | | | | | | UCP202-10 | | UC202-10 | 0.61 | | | | | |
| | | | | | | | | | | | | | UCP203 | | UC203 | 0.60 | | | | | |
| 20 | 3/4 | 33.3 | 127 | 38 | 95 | 13 | 18 | 13 | 64 | 38 | 31 | 12.7 | UCP204 | P204 | UC204 | 0.66 | 12.8 | 6.65 | 13.2 | | |
| | | | | | | | | | | | | | UCP205-14 | | UC205-14 | 0.80 | | | | | |
| | | | | | | | | | | | | | UCP205-15 | P205 | UC205-15 | 0.80 | 14.0 | 7.85 | 13.9 | | |
| | | | | | | | | | | | | | UCP205-16 | | UC205-16 | 0.80 | | | | | |
| 25 | 1 | 44.4 | 159 | 51 | 119 | 17 | 25 | 16 | 86 | 47 | 38.1 | 15.9 | UCPX05 | PX05 | UCX05 | 1.5 | 19.5 | 11.3 | 13.9 | | |
| | | | | | | | | | | | | | UCPX05-16 | | UCX05-16 | 1.5 | | | | | |
| | | | | | | | | | | | | | UCP305 | P305 | UC305 | 1.7 | 21.2 | 10.9 | 12.6 | | |
| | | | | | | | | | | | | | UCP305-16 | | UC305-16 | 1.7 | | | | | |
| | | | | | | | | | | | | | UCP206-18 | | UC206-18 | 1.3 | | | | | |
| | | | | | | | | | | | | | UCP206 | P206 | UC206 | 1.3 | 19.5 | 11.3 | 13.9 | | |
| | | | | | | | | | | | | | UCP206-19 | | UC206-19 | 1.3 | | | | | |
| | | | | | | | | | | | | | UCP206-20 | | UC206-20 | 1.3 | | | | | |
| 30 | 1 3/16 | 47.6 | 175 | 57 | 127 | 17 | 25 | 17 | 93 | 55 | 42.9 | 17.5 | UCPX06 | PX06 | UCX06 | 2.1 | 25.7 | 15.4 | 13.9 | | |
| | | | | | | | | | | | | | UCPX06-19 | | UCX06-19 | 2.1 | | | | | |
| | | | | | | | | | | | | | UCPX06-20 | | UCX06-20 | 2.1 | | | | | |
| | | | | | | | | | | | | | UCP306 | P306 | UC306 | 2.2 | 26.7 | 15.0 | 13.3 | | |
| | | | | | | | | | | | | | UCP207-20 | | UC207-20 | 1.6 | | | | | |
| | | | | | | | | | | | | | UCP207-21 | | UC207-21 | 1.6 | | | | | |
| | | | | | | | | | | | | | UCP207-22 | P207 | UC207-22 | 1.6 | 25.7 | 15.4 | 13.9 | | |
| | | | | | | | | | | | | | UCP207 | | UC207 | 1.6 | | | | | |
| | | | | | | | | | | | | | UCP207-23 | | UC207-23 | 1.6 | | | | | |
| | | | | | | | | | | | | | UCPX07-22 | | UCX07-22 | 2.7 | 29.1 | 17.8 | 14.0 | | |
| | | | | | | | | | | | | | UCPX07 | PX07 | UCX07 | 2.7 | | | | | |
| | | | | | | | | | | | | | UCPX07-23 | | UCX07-23 | 2.7 | | | | | |
| 35 | 1 3/8 | 54 | 203 | 57 | 144 | 17 | 30 | 19 | 105 | 64 | 49.2 | 19 | UCP307 | P307 | UC307 | 3.0 | 33.4 | 19.3 | 13.2 | | |
| | | | | | | | | | | | | | UCP208-24 | | UC208-24 | 2.0 | | | | | |
| | | | | | | | | | | | | | UCP208-25 | P208 | UC208-25 | 2.0 | 29.1 | 17.8 | 14.0 | | |
| | | | | | | | | | | | | | UCP208 | | UC208 | 2.0 | | | | | |
| | | | | | | | | | | | | | UCPX08-24 | | UCX08-24 | 3.5 | 34.1 | 21.3 | 14.0 | | |
| | | | | | | | | | | | | | UCPX08 | PX08 | UCX08 | 3.5 | | | | | |
| | | | | | | | | | | | | | UCP308-24 | | UC308-24 | 3.8 | 40.7 | 24.0 | 13.2 | | |
| | | | | | | | | | | | | | UCP209-26 | | UC209-26 | 2.2 | | | | | |
| | | | | | | | | | | | | | UCP209-27 | P209 | UC209-27 | 2.2 | 34.1 | 21.3 | 14.0 | | |
| | | | | | | | | | | | | | UCP209-28 | | UC209-28 | 2.2 | | | | | |
| | | | | | | | | | | | | | UCP209 | | UC209 | 2.2 | | | | | |
| | | | | | | | | | | | | | UCPX09-28 | PX09 | UCX09-28 | 3.7 | 35.1 | 23.3 | 14.4 | | |
| | | | | | | | | | | | | | UCPX09 | | UCX09 | 3.7 | | | | | |

Tipo Puente

UCP

Agujero cilíndrico (con tornillo fijador)

d (45) ~ (75) mm



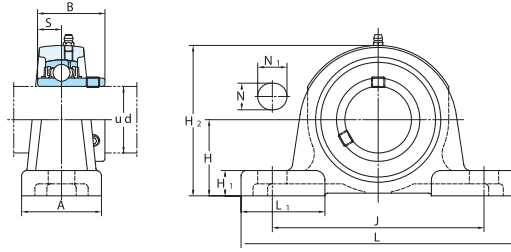
| Diámetro Eje mm d | Dimensiones pulg. mm | | | | | | | | | | | | | Perno pulg. mm | No. Unidad | Estándar No. Alojamiento | No. Inserto | Masa kg | Capacidad Carga Básica kN | | Factor |
|-------------------------|----------------------------|---------|----------|---------|---------|-------|---------|-------|---------|---------|-------|----------------|-----------------|----------------------|------------|--------------------------|-------------|------------|------------------------------|-----------------|--------|
| | H | L | A | J | N | N1 | H1 | H2 | L1 | B | S | C _r | C _{0r} | | | | | | C _r | C _{0r} | |
| 45 | 1 3/4 | 2 41/64 | 9 21/32 | 2 5/8 | 7 15/32 | 25/32 | 1 3/16 | 13/16 | 5 3/16 | 2 15/16 | 2.244 | 0.866 | 5/8 | UCP309-28 | P309 | UC309-28 | 4.9 | 48.9 | 29.5 | 13.3 | |
| | 1 7/8 | 2 1/4 | 8 1/8 | 2 3/8 | 6 1/4 | 25/32 | 7/8 | 3/4 | 4 7/16 | 2 15/32 | 2.031 | 0.748 | 5/8 | UCP210-30 | P210 | UC210-30 | 2.9 | 35.1 | 23.3 | 14.4 | |
| 50 | 1 15/16 | 57.2 | 206 | 60 | 159 | 20 | 22 | 19 | 113 | 63 | 51.6 | 19 | M16 | UCP210-31 | | UC210-31 | 2.9 | | | | |
| | 2 | 2 1/2 | 9 1/2 | 2 7/8 | 6 23/32 | 25/32 | 1 13/32 | 7/8 | 4 3/32 | 3 | 2.189 | 0.874 | 5/8 | UCP210-32 | | UC210-32 | 2.9 | | | | |
| 55 | 2 | 63.5 | 241 | 73 | 171 | 20 | 36 | 22 | 126 | 76 | 55.6 | 22.2 | M16 | UCPX10-31 | PX10 | UCX10-31 | 4.6 | 43.4 | 29.4 | 14.4 | |
| | 2 | 2 61/64 | 10 13/16 | 2 15/16 | 8 11/32 | 25/32 | 1 3/8 | 15/16 | 5 13/16 | 3 15/32 | 2.402 | 0.866 | 5/8 | UCPX10-32 | | UCX10-32 | 4.6 | 62.0 | 38.3 | 13.2 | |
| 60 | 2 | 75 | 275 | 75 | 212 | 20 | 35 | 24 | 148 | 88 | 61 | 22 | M16 | UCP310 | P310 | UC310 | 6.6 | | | | |
| | 2 | 2 1/2 | 8 5/8 | 2 3/8 | 6 23/32 | 25/32 | 7/8 | 3/4 | 4 29/32 | 2 3/4 | 2.189 | 0.874 | 5/8 | UCP211-32 | | UC211-32 | 3.6 | 43.4 | 29.4 | 14.4 | |
| 65 | 2 3/16 | 63.5 | 219 | 60 | 171 | 20 | 22 | 19 | 125 | 70 | 55.6 | 22.2 | M16 | UCP211-34 | P211 | UC211-34 | 3.6 | | | | |
| | 2 3/16 | 63.5 | 219 | 60 | 171 | 20 | 22 | 19 | 125 | 70 | 55.6 | 22.2 | M16 | UCP211-35 | | UC211-35 | 3.6 | | | | |
| 70 | 2 1/4 | 80 | 310 | 80 | 236 | 20 | 38 | 27 | 158 | 90 | 66 | 25 | M16 | UCPX11 | | UCX11 | 6.5 | 52.4 | 36.2 | 14.4 | |
| | 2 1/4 | 80 | 310 | 80 | 236 | 20 | 38 | 27 | 158 | 90 | 66 | 25 | M16 | UCPX11-35 | PX11 | UCX11-35 | 6.5 | 71.6 | 45.0 | 13.2 | |
| 75 | 2 3/8 | 69.8 | 241 | 70 | 184 | 20 | 25 | 22 | 138 | 76 | 65.1 | 25.4 | M16 | UCP212-36 | | UC212-36 | 4.9 | 52.4 | 36.2 | 14.4 | |
| | 2 7/16 | 69.8 | 241 | 70 | 184 | 20 | 25 | 22 | 138 | 76 | 65.1 | 25.4 | M16 | UCP212-38 | P212 | UC212-38 | 4.9 | 57.2 | 40.1 | 14.4 | |
| 80 | 2 1/2 | 80 | 310 | 80 | 236 | 20 | 38 | 27 | 158 | 90 | 66 | 25 | M16 | UCP212-39 | | UC212-39 | 4.9 | 57.2 | 40.1 | 14.4 | |
| | 2 1/2 | 80 | 310 | 80 | 236 | 20 | 38 | 27 | 158 | 90 | 66 | 25 | M16 | UCP212-39 | PX12 | UCX12-39 | 7.7 | 57.2 | 40.1 | 14.4 | |
| 85 | 2 3/4 | 76.2 | 286 | 83 | 203 | 25 | 40 | 28 | 152 | 88 | 65.1 | 25.4 | M20 | UCP312 | | UC312 | 9.5 | 52.4 | 36.2 | 14.4 | |
| | 2 3/4 | 76.2 | 286 | 83 | 203 | 25 | 40 | 28 | 152 | 88 | 65.1 | 25.4 | M20 | UCP312 | P312 | UC312 | 9.5 | 52.4 | 36.2 | 14.4 | |
| 90 | 2 1/2 | 85 | 330 | 85 | 250 | 25 | 38 | 29 | 167 | 103 | 71 | 26 | M20 | UCP213 | | UC213 | 5.9 | 81.9 | 52.2 | 13.2 | |
| | 2 1/2 | 85 | 330 | 85 | 250 | 25 | 38 | 29 | 167 | 103 | 71 | 26 | M20 | UCP213 | P213 | UC213 | 5.9 | 81.9 | 52.2 | 13.2 | |
| 95 | 2 3/4 | 76.2 | 286 | 83 | 203 | 25 | 40 | 28 | 155 | 88 | 74.6 | 30.2 | M20 | UCPX13-40 | PX13 | UCX13-40 | 8.1 | 57.2 | 40.1 | 14.4 | |
| | 2 3/4 | 76.2 | 286 | 83 | 203 | 25 | 40 | 28 | 155 | 88 | 74.6 | 30.2 | M20 | UCPX13-40 | | UCX13-40 | 8.1 | 62.2 | 44.1 | 14.5 | |
| 100 | 2 1/2 | 90 | 340 | 90 | 260 | 25 | 38 | 32 | 176 | 110 | 75 | 30 | M20 | UCP313-40 | P313 | UC313-40 | 10.7 | 62.2 | 44.1 | 14.5 | |
| | 2 1/2 | 90 | 340 | 90 | 260 | 25 | 38 | 32 | 176 | 110 | 75 | 30 | M20 | UCP313-40 | | UC313-40 | 10.7 | 92.7 | 59.9 | 13.2 | |
| 105 | 2 3/4 | 79.4 | 266 | 72 | 210 | 25 | 30 | 28 | 156 | 78 | 74.6 | 30.2 | M20 | UCP214-44 | P214 | UC214-44 | 6.8 | 57.2 | 40.1 | 14.4 | |
| | 2 3/4 | 79.4 | 266 | 72 | 210 | 25 | 30 | 28 | 156 | 78 | 74.6 | 30.2 | M20 | UCP214-44 | | UC214-44 | 6.8 | 62.2 | 44.1 | 14.5 | |
| 110 | 2 3/4 | 88.9 | 330 | 89 | 229 | 27 | 50 | 32 | 171 | 98 | 77.8 | 33.3 | M22 | UCPX14-44 | PX14 | UCX14-44 | 10.2 | 67.4 | 48.3 | 14.5 | |
| | 2 3/4 | 88.9 | 330 | 89 | 229 | 27 | 50 | 32 | 171 | 98 | 77.8 | 33.3 | M22 | UCPX14-44 | | UCX14-44 | 10.2 | 67.4 | 48.3 | 14.5 | |
| 115 | 2 3/4 | 95 | 360 | 90 | 280 | 27 | 40 | 35 | 186 | 110 | 78 | 33 | M22 | UCP314-44 | P314 | UC314-44 | 12.4 | 104 | 68.2 | 13.2 | |
| | 2 3/4 | 95 | 360 | 90 | 280 | 27 | 40 | 35 | 186 | 110 | 78 | 33 | M22 | UCP314-44 | | UC314-44 | 12.4 | 104 | 68.2 | 13.2 | |
| 120 | 2 15/16 | 82.6 | 275 | 74 | 217 | 25 | 30 | 28 | 162 | 80 | 77.8 | 33.3 | M20 | UCP215-47 | P215 | UC215-47 | 7.4 | 67.4 | 48.3 | 14.5 | |
| | 2 15/16 | 82.6 | 275 | 74 | 217 | 25 | 30 | 28 | 162 | 80 | 77.8 | 33.3 | M20 | UCP215-47 | | UC215-47 | 7.4 | 67.4 | 48.3 | 14.5 | |
| 125 | 2 15/16 | 88.9 | 330 | 89 | 229 | 27 | 50 | 32 | 175 | 99 | 82.6 | 33.3 | M22 | UCPX15-47 | PX15 | UCX15-47 | 10.8 | 72.7 | 53.0 | 14.6 | |
| | 2 15/16 | 88.9 | 330 | 89 | 229 | 27 | 50 | 32 | 175 | 99 | 82.6 | 33.3 | M22 | UCPX15-47 | | UCX15-47 | 10.8 | 72.7 | 53.0 | 14.6 | |

Tipo Puente

UCP

Agujero cilíndrico (con tornillo fijador)

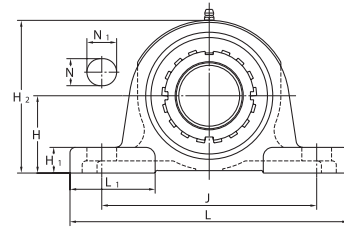
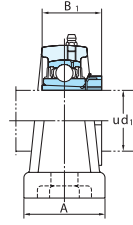
d (75) ~ (140) mm



| Diámetro Eje mm | d | Dimensiones | | | | | | | | | | | | | Perno | No. Unidad | Estándar No. Alojamiento | No. Inserto | Masa kg | Capacidad Carga Básica kN | | Factor |
|--------------------|---------|-------------|----------|---------|----------|---------|---------|---------|----------|----------------|----------------|----------------|--------|-----------|-------|------------|--------------------------|-------------|---------|---------------------------|-----------------|--------|
| | | H | L | A | J | N | N | N | N | H ₁ | H ₂ | L ₁ | B | S | | | | | | C _r | C _{or} | |
| 75 | 2 15/16 | 3 15/16 | 14 31/32 | 3 15/16 | 11 13/32 | 1 1/16 | 1 9/16 | 1 3/8 | 7 25/32 | 4 1/32 | 3 228 | 1.260 | 7/8 | UCP315-47 | P315 | UC315-47 | 14.8 | 113 | 77.2 | 13.2 | | |
| | 3 | 3 1/2 | 11 1/2 | 3 1/16 | 9 1/8 | 3 1/32 | 1 3/8 | 1 1/4 | 6 25/32 | 3 3/8 | 3 252 | 1.311 | 3/4 | UCP315 | P315 | UC315 | 14.8 | 113 | 77.2 | 13.2 | | |
| | 3 1/8 | 88.9 | 292 | 78 | 232 | 25 | 35 | 32 | 174 | 86 | 82.6 | 33.3 | M22 | UCP315-48 | P315 | UC315-48 | 14.8 | 113 | 77.2 | 13.2 | | |
| 80 | - | 4 | 15 | 4 | 11 1/8 | 1 1/16 | 2 9/32 | 1 1/16 | 7 11/16 | 4 9/16 | 3 374 | 1.343 | 7/8 | UCP216-50 | P216 | UC216-50 | 9.0 | 72.7 | 53.0 | 14.6 | | |
| | - | 4 | 15 | 4 | 11 1/8 | 1 1/16 | 2 9/32 | 1 1/16 | 7 11/16 | 4 9/16 | 3 374 | 1.343 | M20 | UCP216 | P216 | UC216 | 9.0 | 72.7 | 53.0 | 14.6 | | |
| | 3 1/4 | 101.6 | 381 | 102 | 283 | 27 | 58 | 34 | 195 | 116 | 85.7 | 34.1 | M22 | UCPX16 | PX16 | UCX16 | 15.3 | 84.0 | 61.9 | 14.5 | | |
| 85 | - | 4 11/64 | 15 3/4 | 4 11/32 | 11 13/16 | 1 1/16 | 1 9/16 | 1 3/8 | 8 7/32 | 4 29/32 | 3 386 | 1.339 | 7/8 | UCP316 | P316 | UC316 | 18.5 | 123 | 86.7 | 13.3 | | |
| | 3 1/4 | 106 | 400 | 110 | 300 | 27 | 40 | 35 | 209 | 120 | 86 | 34 | M22 | UCP217-52 | P217 | UC217-52 | 10.8 | 84.0 | 61.9 | 14.5 | | |
| | 95.2 | 310 | 83 | 247 | 25 | 40 | 32 | 185 | 90 | 85.7 | 34.1 | M20 | UCP217 | PX17 | UCX17 | 16.1 | 96.1 | 71.5 | 14.5 | | | |
| 90 | 3 7/16 | 101.6 | 381 | 102 | 283 | 27 | 60 | 34 | 200 | 116 | 96 | 39.7 | M22 | UCPX17-55 | PX17 | UCX17-55 | 16.1 | 96.1 | 71.5 | 14.5 | | |
| | - | 4 13/32 | 16 17/32 | 4 11/32 | 12 19/32 | 1 5/16 | 1 25/32 | 1 9/16 | 8 21/32 | 4 23/32 | 3 780 | 1.563 | 7/8 | UCP317 | P317 | UC317 | 20.3 | 133 | 96.8 | 13.3 | | |
| | 3 1/2 | 112 | 420 | 110 | 320 | 33 | 45 | 40 | 220 | 120 | 96 | 40 | M27 | UCP218-56 | P218 | UC218-56 | 13.9 | 96.1 | 71.5 | 14.5 | | |
| 95 | - | 4 | 15 | 4 3/8 | 11 1/8 | 1 1/16 | 2 3/8 | 1 11/32 | 7 7/8 | 4 9/16 | 3 780 | 1.563 | 7/8 | UCP318 | PX18 | UCX18 | 19.1 | 109 | 81.9 | 14.4 | | |
| | 3 1/2 | 101.6 | 381 | 111 | 283 | 27 | 60 | 38 | 204 | 116 | 104 | 42.9 | M22 | UCP318-56 | P318 | UC318-56 | 22.8 | 143 | 107 | 13.3 | | |
| | 118 | 430 | 110 | 330 | 33 | 45 | 40 | 234 | 120 | 96 | 40 | M27 | UCP319 | P319 | UC319 | 29.0 | 153 | 119 | 13.3 | | | |
| 100 | - | 4 59/64 | 18 1/2 | 4 23/32 | 14 3/16 | 1 13/32 | 1 31/32 | 1 13/16 | 9 3/4 | 4 29/32 | 4 055 | 1.614 | 1 1/8 | UCPX20 | PX20 | UCX20 | 30.4 | 133 | 105 | 14.4 | | |
| | 3 15/16 | 127 | 432 | 121 | 337 | 33 | 65 | 45 | 245 | 126 | 117.5 | 49.2 | M27 | UCP20-63 | PX20 | UCX20-63 | 30.4 | 133 | 105 | 14.4 | | |
| | 4 | 140 | 490 | 120 | 380 | 36 | 50 | 46 | 248 | 125 | 103 | 41 | M30 | UCP20-64 | PX20 | UCX20-64 | 30.4 | 133 | 105 | 14.4 | | |
| 105 | - | 5 33/64 | 19 9/32 | 4 23/32 | 14 31/32 | 1 13/32 | 1 31/32 | 1 13/16 | 10 3/4 | 5 1/2 | 4 252 | 1.654 | 1 1/8 | UCP320 | P320 | UC320 | 35.1 | 173 | 141 | 13.2 | | |
| | 3 15/16 | 140 | 490 | 120 | 380 | 36 | 50 | 46 | 273 | 140 | 108 | 42 | M30 | UCP320-63 | P320 | UC320-63 | 35.1 | 173 | 141 | 13.2 | | |
| | 4 | 140 | 490 | 120 | 380 | 36 | 50 | 46 | 278 | 140 | 112 | 44 | M30 | UCP320-64 | P320 | UC320-64 | 35.1 | 173 | 141 | 13.2 | | |
| 110 | - | 5 29/32 | 20 15/32 | 5 1/2 | 15 3/4 | 1 9/16 | 2 5/32 | 1 31/32 | 11 21/32 | 5 29/32 | 4 606 | 1.811 | 1 1/4 | UCP321 | P321 | UC321 | 37.6 | 184 | 153 | 13.2 | | |
| | 3 15/16 | 150 | 520 | 140 | 400 | 40 | 55 | 50 | 296 | 150 | 117 | 46 | M33 | UCP322 | P322 | UC322 | 44.0 | 205 | 180 | 13.2 | | |
| | 4 | 150 | 520 | 140 | 400 | 40 | 55 | 50 | 296 | 150 | 117 | 46 | M33 | UCP324 | P324 | UC324 | 55.4 | 207 | 185 | 13.5 | | |
| 120 | - | 6 19/64 | 22 7/16 | 5 1/2 | 17 23/32 | 1 9/16 | 2 5/32 | 1 31/32 | 12 7/16 | 6 5/16 | 4 961 | 2.008 | 1 1/4 | UCP326 | P326 | UC326 | 72.1 | 229 | 214 | 13.6 | | |
| | 3 15/16 | 160 | 570 | 140 | 450 | 40 | 55 | 50 | 316 | 160 | 126 | 51 | M33 | UCP328 | P328 | UC328 | 92.5 | 253 | 246 | 13.6 | | |
| | 4 | 180 | 600 | 140 | 480 | 40 | 55 | 50 | 355 | 195 | 135 | 54 | M33 | UCP326 | P326 | UC326 | 72.1 | 229 | 214 | 13.6 | | |
| 140 | - | 7 7/8 | 24 13/32 | 5 1/2 | 19 11/16 | 1 9/16 | 2 5/32 | 1 15/32 | 15 15/32 | 7 9/32 | 5 709 | 2.323 | 1 1/4 | UCP326 | P326 | UC326 | 72.1 | 229 | 214 | 13.6 | | |
| | 3 15/16 | 200 | 620 | 140 | 500 | 40 | 55 | 60 | 393 | 185 | 145 | 59 | M33 | UCP328 | P328 | UC328 | 92.5 | 253 | 246 | 13.6 | | |
| | 4 | 200 | 620 | 140 | 500 | 40 | 55 | 60 | 393 | 185 | 145 | 59 | M33 | UCP328 | P328 | UC328 | 92.5 | 253 | 246 | 13.6 | | |

Tipo Puente

UKP Agujero cilíndrico (con kit de montaje) $d_1 (20) \sim (50) \text{ mm}$



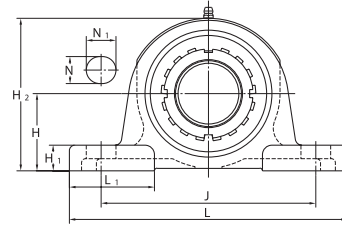
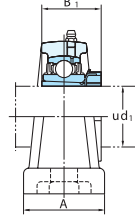
| Diámetro Eje mm d_1 | Dimensiones pulg. mm | | | | | | | | | | | | | Perno pulg. mm | No. Unidad | Estándar No. Alojamiento | No. Inserito | Kit de Montaje | Masa kg | Capacidad Carga Básica kN | | Factor |
|-----------------------------|----------------------------|-------------------|--------------------|-------------------|-------------------|------------------|------------------|-------------------|----------------------------------|------------------------------------|------------------------------------|-----------------|----------------|----------------------|----------------------------------|-----------------------------|--------------|----------------|------------|------------------------------|--|--------|
| | H | L | A | J | N | N1 | H1 | H2 | L1 | B1(1) | C _r | C _{0r} | f ₀ | | | | | | | | | |
| 20 | $\frac{3}{4}$ | $1 \frac{1}{16}$ | $5 \frac{1}{2}$ | $1 \frac{1}{2}$ | $4 \frac{1}{8}$ | $\frac{1}{2}$ | $2 \frac{5}{32}$ | $1 \frac{11}{16}$ | $1 \frac{5}{32}(1 \frac{3}{16})$ | $\frac{3}{8}$ | M10 | UKP205 | P205 | UK205 | HE305X(HE2305X) H305X(H2305X) | 0.84 | 14.0 | 7.85 | 13.9 | | | |
| | $\frac{3}{4}$ | $1 \frac{3}{4}$ | $6 \frac{1}{4}$ | 2 | $4 \frac{11}{16}$ | $2 \frac{1}{32}$ | $3 \frac{1}{32}$ | $\frac{5}{8}$ | $3 \frac{3}{8}$ | $1 \frac{27}{32}$ | $1 \frac{3}{8}$ | M14 | UKPX05 | PX05 | UKX05 | HE2305X | 1.5 | 19.5 | 11.3 | 13.9 | | |
| | $\frac{3}{4}$ | $1 \frac{9}{16}$ | $6 \frac{1}{8}$ | $1 \frac{3}{4}$ | $5 \frac{3}{16}$ | $2 \frac{1}{32}$ | $2 \frac{5}{32}$ | $\frac{5}{8}$ | $3 \frac{11}{32}$ | $2 \frac{5}{32}$ | $1 \frac{3}{8}$ | M14 | UKP305 | P305 | UK305 | HE2305X | 1.7 | 21.2 | 10.9 | 12.6 | | |
| 25 | 1 | $1 \frac{11}{16}$ | $6 \frac{1}{2}$ | $1 \frac{7}{8}$ | $4 \frac{3}{4}$ | $2 \frac{1}{32}$ | $3 \frac{1}{16}$ | $1 \frac{9}{32}$ | $2 \frac{5}{32}$ | $1 \frac{7}{32}(1 \frac{1}{2})$ | M14 | UKP206 | P206 | UK206 | H306X(H2306X) | 1.4 | 19.5 | 11.3 | 13.9 | | | |
| | 1 | $1 \frac{7}{8}$ | $6 \frac{1}{8}$ | $2 \frac{1}{4}$ | 5 | $2 \frac{1}{32}$ | $3 \frac{1}{32}$ | $2 \frac{1}{32}$ | $3 \frac{1}{32}$ | $2 \frac{5}{32}$ | $1 \frac{1}{2}$ | M14 | UKPX06 | PX06 | UKX06 | HE2306X | 2.1 | 25.7 | 15.4 | 13.9 | | |
| | 1 | $1 \frac{31}{32}$ | $7 \frac{1}{32}$ | $1 \frac{31}{32}$ | $5 \frac{1}{2}$ | $2 \frac{1}{32}$ | $2 \frac{5}{32}$ | $3 \frac{3}{4}$ | $2 \frac{5}{32}$ | $1 \frac{1}{2}$ | M14 | UKP306 | P306 | UK306 | HE2306X | 2.3 | 26.7 | 15.0 | 13.3 | | | |
| 30 | $1 \frac{1}{8}$ | $1 \frac{7}{8}$ | $6 \frac{9}{16}$ | $1 \frac{7}{8}$ | 5 | $2 \frac{1}{32}$ | $3 \frac{1}{16}$ | $\frac{5}{8}$ | $3 \frac{21}{32}$ | $2 \frac{1}{8}(1 \frac{11}{16})$ | M14 | UKP207 | P207 | UK207 | HS307X(HS2307X) | 1.7 | 25.7 | 15.4 | 13.9 | | | |
| | $1 \frac{1}{8}$ | $2 \frac{1}{8}$ | 8 | $2 \frac{1}{4}$ | $5 \frac{11}{16}$ | $2 \frac{1}{32}$ | $1 \frac{3}{16}$ | $\frac{3}{4}$ | $4 \frac{7}{8}$ | $2 \frac{17}{32}$ | $1 \frac{11}{16}$ | M14 | UKPX07 | PX07 | UKX07 | HS2307X | 2.7 | 29.1 | 17.8 | 14.0 | | |
| | $1 \frac{1}{8}$ | $2 \frac{13}{64}$ | $8 \frac{9}{32}$ | $2 \frac{7}{32}$ | $6 \frac{5}{16}$ | $2 \frac{1}{32}$ | $3 \frac{1}{32}$ | $\frac{3}{4}$ | $4 \frac{7}{32}$ | $2 \frac{9}{16}$ | $1 \frac{11}{16}$ | M14 | UKP307 | P307 | UK307 | HS2307X | 3.0 | 33.4 | 19.3 | 13.2 | | |
| 35 | $1 \frac{1}{4}$ | $1 \frac{15}{16}$ | $7 \frac{1}{4}$ | $2 \frac{1}{8}$ | $5 \frac{13}{32}$ | $2 \frac{1}{32}$ | $3 \frac{1}{16}$ | $2 \frac{1}{32}$ | $3 \frac{27}{32}$ | $2 \frac{1}{4}$ | $1 \frac{13}{32}(1 \frac{13}{16})$ | M14 | UKP208 | P208 | UK208 | HS308X(HE2308X) | 2.0 | 29.1 | 17.8 | 14.0 | | |
| | $1 \frac{1}{4}$ | $2 \frac{5}{16}$ | $8 \frac{3}{4}$ | $2 \frac{5}{8}$ | $6 \frac{1}{8}$ | $1 \frac{1}{4}$ | $1 \frac{3}{16}$ | $4 \frac{1}{2}$ | $2 \frac{25}{32}$ | $1 \frac{13}{16}$ | M16 | UKPX08 | PX08 | UKX08 | HE2308X | 3.5 | 34.1 | 21.3 | 14.0 | | | |
| | $1 \frac{3}{8}$ | $2 \frac{9}{16}$ | $8 \frac{1}{2}$ | $2 \frac{3}{8}$ | $6 \frac{11}{16}$ | $1 \frac{1}{16}$ | $1 \frac{1}{16}$ | $\frac{3}{4}$ | $4 \frac{21}{32}$ | $2 \frac{9}{16}$ | $1 \frac{13}{16}$ | M14 | UKP308 | P308 | UK308 | HE2308X | 3.8 | 40.7 | 24.0 | 13.2 | | |
| 40 | $1 \frac{1}{2}$ | $2 \frac{1}{8}$ | $9 \frac{1}{2}$ | $2 \frac{1}{8}$ | $7 \frac{15}{32}$ | $2 \frac{1}{32}$ | $3 \frac{1}{16}$ | $4 \frac{3}{16}$ | $4 \frac{3}{16}$ | $1 \frac{17}{32}(1 \frac{31}{32})$ | M14 | UKP209 | P209 | UK209 | HE309X(HE2309X) | 2.3 | 34.1 | 21.3 | 14.0 | | | |
| | $1 \frac{1}{2}$ | $2 \frac{5}{16}$ | $9 \frac{1}{2}$ | $2 \frac{5}{8}$ | $7 \frac{15}{32}$ | $2 \frac{1}{32}$ | $3 \frac{1}{16}$ | $4 \frac{9}{16}$ | $4 \frac{9}{16}$ | $2 \frac{25}{32}$ | $1 \frac{31}{32}$ | M16 | UKPX09 | PX09 | UKX09 | HE2309X | 3.7 | 35.1 | 23.3 | 14.4 | | |
| | $1 \frac{5}{8}$ | $2 \frac{9}{16}$ | $9 \frac{1}{2}$ | $2 \frac{9}{8}$ | $7 \frac{15}{32}$ | $2 \frac{1}{32}$ | $3 \frac{1}{16}$ | $4 \frac{9}{16}$ | $4 \frac{9}{16}$ | $2 \frac{25}{32}$ | $1 \frac{31}{32}$ | M16 | UKP309 | P309 | UK309 | HE2309X | 5.0 | 48.9 | 29.5 | 13.3 | | |
| 45 | $1 \frac{3}{4}$ | $2 \frac{1}{4}$ | $10 \frac{1}{8}$ | $2 \frac{3}{8}$ | $8 \frac{1}{2}$ | $2 \frac{1}{32}$ | $3 \frac{1}{8}$ | $4 \frac{7}{8}$ | $4 \frac{7}{8}$ | $2 \frac{17}{32}(2 \frac{5}{32})$ | M16 | UKP210 | P210 | UK210 | HE310X(HE2310X) | 3.0 | 35.1 | 23.3 | 14.4 | | | |
| | $1 \frac{3}{4}$ | $2 \frac{1}{2}$ | $10 \frac{1}{2}$ | $2 \frac{7}{8}$ | $8 \frac{1}{2}$ | $2 \frac{1}{32}$ | $3 \frac{1}{8}$ | $4 \frac{7}{8}$ | $4 \frac{7}{8}$ | $2 \frac{17}{32}$ | $1 \frac{31}{32}$ | M16 | UKPX10 | PX10 | UKX10 | HE2310X | 4.6 | 43.4 | 29.4 | 14.4 | | |
| | $1 \frac{3}{4}$ | $2 \frac{9}{16}$ | $10 \frac{15}{16}$ | $2 \frac{5}{8}$ | $8 \frac{1}{2}$ | $2 \frac{1}{32}$ | $3 \frac{1}{8}$ | $4 \frac{7}{8}$ | $4 \frac{7}{8}$ | $2 \frac{17}{32}$ | $1 \frac{31}{32}$ | M16 | UKP310 | P310 | UK310 | HE2310X | 6.7 | 62.0 | 38.3 | 13.2 | | |
| 50 | $1 \frac{7}{8}$ | $2 \frac{1}{2}$ | $11 \frac{1}{8}$ | $2 \frac{3}{4}$ | $9 \frac{1}{2}$ | $2 \frac{1}{32}$ | $3 \frac{1}{4}$ | $4 \frac{7}{8}$ | $4 \frac{7}{8}$ | $2 \frac{17}{32}(2 \frac{5}{16})$ | M16 | UKP211 | P211 | UK211 | HS311X(HS2311X) | 3.7 | 43.4 | 29.4 | 14.4 | | | |
| | 2 | $2 \frac{1}{2}$ | $11 \frac{1}{8}$ | $2 \frac{3}{4}$ | $9 \frac{1}{2}$ | $2 \frac{1}{32}$ | $3 \frac{1}{4}$ | $4 \frac{7}{8}$ | $4 \frac{7}{8}$ | $2 \frac{17}{32}$ | $1 \frac{31}{32}$ | M16 | UKPX11 | PX11 | UKX11 | HS311X(HS2311X) | 3.7 | 43.4 | 29.4 | 14.4 | | |

Tipo Puente

UKP

Agujero cilíndrico (con kit de montaje)

d₁ (5) ~ 85 mm



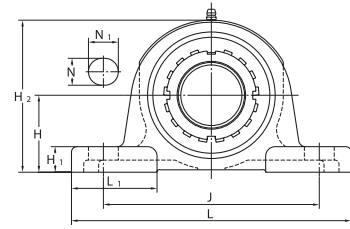
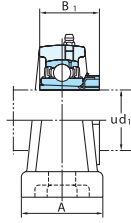
| Diámetro Eje mm d ₁ | Dimensiones pulg.-mm | | | | | | | | | | | | | | | | Perno pulg. mm | No. Unidad | Estándar No. Alojamiento | No. Inserto | Kit de Montaje | Masa kg | Capacidad Carga Básica kN | | Factor f ₀ |
|--------------------------------------|-------------------------|--------|----------|---------|----------|---------|---------|---------|----------------|----------------|-----------------|------------------------------|----------------|-----------------|-----|--------|----------------------|------------|-------------------------------|----------------------|----------------|------------|------------------------------|--|--------------------------|
| | H | L | A | J | N | N | N | N | H ₁ | H ₂ | L ₁ | B ₁ ¹⁾ | C _r | C _{br} | | | | | | | | | | | |
| 50 | 1 7/8 | 2 3/4 | 10 1/4 | 3 1/8 | 7 1/4 | 3 1/2 | 1 13/32 | 1 13/32 | 36 | 28 | 139 | 83 | 59 | 3/4 | M20 | UKPX11 | PX11 | UKX11 | HE2311X HE2311X HE2311X | 6.2 6.2 6.2 | 52.4 | 36.2 | 14.4 | | |
| | 2 | 3 1/2 | 12 1/2 | 3 1/2 | 9 1/2 | 2 5/8 | 1 1/2 | 1 1/2 | 38 | 27 | 158 | 90 | 59 | 5/8 | M16 | UKP311 | P311 | UK311 | HE2311X | 8.1 8.1 8.1 | 71.6 | 45.0 | 13.2 | | |
| 55 | 2 1/8 | 2 3/4 | 9 1/2 | 2 3/4 | 7 1/4 | 3 1/2 | 3 1/2 | 7/8 | 5 7/16 | 3 | 2 17/32(2 7/16) | 47(62) | 59 | 5/8 | M16 | UKP212 | P212 | UK212 | HE2312X HE2312X HE2312X | 4.8 4.8 4.8 | 52.4 | 36.2 | 14.4 | | |
| | 2 1/8 | 3 | 11 1/4 | 3 1/4 | 8 | 3 1/2 | 1 9/16 | 1 3/32 | 3 15/32 | 2 7/16 | 5 31/32 | 88 | 62 | 3/4 | M20 | UKPX12 | PX12 | UKX12 | HE2312X | 7.5 | 57.2 | 40.1 | 14.4 | | |
| 60 | 2 1/8 | 3 1/2 | 13 | 3 1/2 | 9 7/8 | 3 1/2 | 1 1/2 | 1 5/32 | 6 9/16 | 4 1/16 | 2 7/16 | 62 | 62 | 3/4 | M20 | UKP312 | P312 | UK312 | HE2312X HE2312X HE2312X | 9.4 9.4 9.4 | 81.9 | 52.2 | 13.2 | | |
| | 2 3/8 | 3 | 10 7/16 | 2 3/4 | 8 | 3 1/2 | 1 3/16 | 3 1/32 | 5 29/32 | 3 1/16 | 1 31/32(2 9/16) | 50(65) | 65 | 3/4 | M20 | UKP213 | P213 | UK213 | HE2313X HE2313X HE2313X | 5.8 5.8 5.8 | 57.2 | 40.1 | 14.4 | | |
| 65 | 2 3/8 | 3 | 11 1/4 | 3 1/4 | 8 | 3 1/2 | 1 9/16 | 1 3/32 | 6 3/32 | 3 15/32 | 2 9/16 | 65 | 65 | 3/4 | M20 | UKPX13 | PX13 | UKX13 | HE2313X | 7.8 | 62.2 | 44.1 | 14.5 | | |
| | 2 1/2 | 3 1/4 | 10 13/16 | 2 9/32 | 8 1/32 | 3 1/2 | 1 3/16 | 1 3/32 | 6 3/8 | 3 5/32 | 2 5/32(2 7/8) | 55(73) | 73 | 3/4 | M20 | UKP313 | P313 | UK313 | HE2313X | 10.8 | 92.7 | 59.9 | 13.2 | | |
| 70 | 2 1/2 | 3 1/2 | 13 | 3 1/2 | 9 | 2 7/8 | 1 1/16 | 1 31/32 | 1 1/4 | 6 7/8 | 3 29/32 | 2 7/8 | 73 | 7/8 | M22 | UKPX15 | PX15 | UKX15 | HE2315X HE2315X HE2315X | 10.5 10.5 10.5 | 72.7 | 53.0 | 14.6 | | |
| | 2 1/2 | 3 1/2 | 14 3/32 | 3 1/16 | 11 13/32 | 1 1/16 | 1 9/16 | 1 3/8 | 7 25/32 | 4 7/32 | 2 7/8 | 73 | 73 | 7/8 | M22 | UKP315 | P315 | UK315 | HE2315X | 14.9 14.9 | 113 | 77.2 | 13.2 | | |
| 75 | 2 3/4 | 3 1/2 | 11 1/2 | 3 1/16 | 9 1/8 | 3 1/2 | 1 3/8 | 1 1/4 | 6 27/32 | 3 3/8 | 2 5/16(3 1/16) | 59(78) | 78 | 3/4 | M20 | UKP216 | P216 | UK216 | HE2316X HE2316X HE2316X | 9.2 9.2 9.2 | 72.7 | 53.0 | 14.6 | | |
| | 2 3/4 | 4 | 15 | 4 | 11 1/8 | 1 1/16 | 2 9/32 | 1 11/32 | 7 11/16 | 4 9/16 | 3 1/16 | 78 | 78 | 7/8 | M22 | UKPX16 | PX16 | UKX16 | HE2316X | 15.4 | 84.0 | 61.9 | 14.5 | | |
| 80 | 2 3/4 | 4 1/16 | 15 3/4 | 4 11/32 | 11 13/16 | 1 1/16 | 1 9/16 | 1 3/8 | 8 7/32 | 4 23/32 | 3 1/16 | 78 | 78 | 7/8 | M22 | UKP316 | P316 | UK316 | HE2316X | 18.6 | 123 | 86.7 | 13.3 | | |
| | 3 | 3 3/4 | 12 7/32 | 3 9/32 | 9 23/32 | 3 1/2 | 1 9/16 | 1 1/4 | 7 9/32 | 3 17/32 | 2 15/32(3 7/32) | 63(82) | 82 | 3/4 | M20 | UKP217 | P217 | UK217 | HE2317X HE2317X HE2317X | 11.0 11.0 11.0 | 84.0 | 61.9 | 14.5 | | |
| 85 | 3 | 4 | 15 | 4 | 11 1/8 | 1 1/16 | 2 3/8 | 1 11/32 | 7 7/8 | 4 9/16 | 3 7/32 | 82 | 82 | 7/8 | M22 | UKPX17 | PX17 | UKX17 | HE2317X | 15.8 | 96.1 | 71.5 | 14.5 | | |
| | 3 | 4 1/32 | 16 17/32 | 4 11/32 | 12 29/32 | 1 9/16 | 1 29/32 | 1 9/16 | 8 21/32 | 4 23/32 | 3 7/32 | 82 | 82 | 1 | M27 | UKP317 | P317 | UK317 | HE2317X | 20.2 | 133 | 96.8 | 13.3 | | |
| 85 | - | 4 | 12 7/8 | 3 15/32 | 10 5/16 | 1 1/16 | 1 29/32 | 1 11/32 | 7 25/32 | 4 3/32 | 2 9/16(3 3/8) | 65(86) | 86 | 7/8 | M22 | UKP218 | P218 | UK218 | HE2318X HE2318X HE2318X | 13.8 13.8 13.8 | 96.1 | 71.5 | 14.5 | | |
| | - | 4 | 15 | 4 3/8 | 11 1/8 | 1 1/16 | 2 3/8 | 1 1/2 | 8 1/32 | 4 9/16 | 3 3/8 | 86 | 86 | 7/8 | M22 | UKPX18 | PX18 | UKX18 | HE2318X | 18.6 | 109 | 81.9 | 14.4 | | |
| 85 | - | 4 1/16 | 16 15/16 | 4 11/32 | 13 | 1 5/16 | 1 25/32 | 1 9/16 | 9 7/32 | 4 23/32 | 3 3/8 | 86 | 86 | 1 | M27 | UKP318 | P318 | UK318 | HE2318X | 22.8 | 143 | 107 | 13.3 | | |
| | 3 1/4 | 4 3/16 | 18 1/2 | 4 23/32 | 14 3/16 | 1 13/32 | 1 31/32 | 1 13/16 | 9 3/4 | 4 29/32 | 3 17/32 | 90 | 90 | 1 1/8 | M30 | UKP319 | P319 | UK319 | HE2319X | 29.3 29.3 | 153 | 119 | 13.3 | | |

Tipo Puente

UKP

Agujero cilíndrico (con kit de montaje)

d_1 90 ~ 125 mm



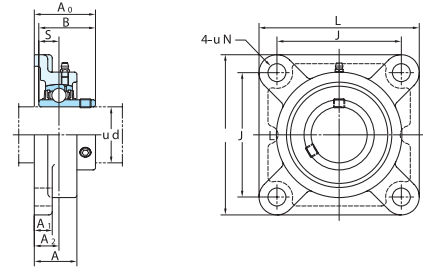
| Diámetro Eje mm d_1 | Dimensiones pulg. mm | | | | | | | | | | | | | | Perno pulg. mm | No. Unidad | Estándar No. Alojamiento | No. Inserto | Kit de Montaje | Masa kg | Capacidad Carga Básica kN | | Factor f_0 |
|-----------------------------|----------------------------|----------|---------|----------|---------|---------|---------|----------|----------------|----------------|----------------|------------------------------|----------------|-----------------|----------------------|------------|-----------------------------|-------------|----------------|------------|------------------------------|--|-----------------|
| | H | L | A | J | N | N | N | N | H ₁ | H ₂ | L ₁ | B ₁ ¹⁾ | C _r | C _{0r} | | | | | | | | | |
| 90 | 5 | 17 | 4 3/4 | 13 1/4 | 1 5/16 | 2 9/16 | 1 25/32 | 9 27/32 | 4 31/32 | 3 13/16 | 1 | UKPX20 | PX20 | UKX20 | HE2320X H2320X | 29.3 | 133 | 105 | 14.4 | | | | |
| | 127 | 432 | 121 | 337 | 33 | 65 | 45 | 245 | 126 | 97 | M27 | | | | | 29.3 | | | | | | | |
| 100 | 5 5/64 | 19 9/32 | 4 29/32 | 14 21/32 | 1 13/32 | 1 31/32 | 1 13/16 | 10 3/4 | 5 1/2 | 3 13/16 | 1 1/8 | UKP320 | P320 | UK320 | HE2320X H2320X | 34.8 | 173 | 141 | 13.2 | | | | |
| | 140 | 490 | 120 | 380 | 36 | 50 | 46 | 273 | 140 | 97 | M30 | | | | | 34.8 | | | | | | | |
| 110 | 5 29/32 | 20 15/32 | 5 1/2 | 15 3/4 | 1 9/16 | 2 5/32 | 1 31/32 | 11 21/32 | 5 29/32 | 4 7/8 | 1 1/4 | UKP322 | P322 | UK322 | HE2322X H2322X | 43.9 | 205 | 180 | 13.2 | | | | |
| | 150 | 520 | 140 | 400 | 40 | 55 | 50 | 296 | 150 | 105 | M33 | | | | | 43.9 | | | | | | | |
| 115 | 6 19/64 | 22 7/16 | 5 1/2 | 17 33/32 | 1 9/16 | 2 5/32 | 1 31/32 | 12 7/16 | 6 5/16 | 4 13/32 | 1 1/4 | UKP324 | P324 | UK324 | H2324 | 55.7 | 207 | 185 | 13.5 | | | | |
| | 160 | 570 | 140 | 450 | 40 | 55 | 50 | 316 | 160 | 112 | M33 | | | | | 55.7 | | | | | | | |
| 125 | 7 3/32 | 23 5/8 | 5 1/2 | 18 29/32 | 1 9/16 | 2 5/32 | 1 31/32 | 13 21/32 | 7 11/16 | 4 3/4 | 1 1/4 | UKP326 | P326 | UK326 | HE2326 H2326 | 71.9 | 229 | 214 | 13.6 | | | | |
| | 180 | 600 | 140 | 480 | 40 | 55 | 50 | 355 | 195 | 121 | M33 | | | | | 71.9 | | | | | | | |
| 125 | 7 7/8 | 24 13/32 | 5 1/2 | 19 11/16 | 1 9/16 | 2 5/32 | 2 3/8 | 15 15/32 | 7 9/32 | 5 5/32 | 1 1/4 | UKP328 | P328 | UK328 | H2328 | 92.5 | 253 | 246 | 13.6 | | | | |
| | 200 | 620 | 140 | 500 | 40 | 55 | 60 | 393 | 185 | 131 | M33 | | | | | 92.5 | | | | | | | |

Tipo Brida Cuadrada

UCF

Agujero cilíndrico (con tornillo fijador)

d 12 ~ (45) mm



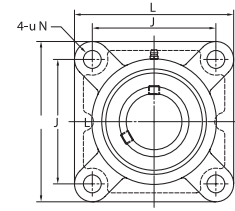
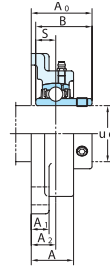
| Diámetro Eje mm pulg d | Dimensiones pulg. mm | | | | | | | | | | | | | Perno pulg. mm | Estándar | | Masa kg | Capacidad Carga Básica kN | | Factor |
|------------------------------|----------------------------|------|---------|-------|------|-------|----------------|----------------|------|-------|------------|-----------------|--|--|--|-----------------|------------|---------------------------------|--|--------|
| | L | A | A | N | A | A | A ₂ | A ₀ | B | S | No. Unidad | No. Alojamiento | No. Inserto | | C _r | C _{or} | | f ₀ | | |
| 12 | 3 3/8 | 1 | 2 33/64 | 15/32 | 7/16 | 19/32 | 1 5/16 | 33.3 | 31 | 1.220 | 0.500 | 3/8 | UCF201 | UC201 | 0.64 | | | | | |
| 15 | 86 | 25.5 | 64 | 12 | 11 | 15 | 33.3 | 31 | 12.7 | | | M10 | UCF201-8 UCF202 UCF202-10 UCF203 UCF204-12 UCF204 | UC201-8 UC202 UC202-10 UC203 UC204-12 UC204 | 0.64 0.62 0.62 0.61 0.61 0.59 | 12.8 | 6.65 | 13.2 | | |
| 20 | 95 | 27 | 70 | 12 | 13 | 16 | 35.8 | 34.1 | 14.3 | | | M10 | UCF205-14 UCF205-15 UCF205 | UC205-14 UC205-15 UC205 | 0.83 0.83 0.83 | 14.0 | 7.85 | 13.9 | | |
| 25 | 108 | 30 | 83 | 12 | 13 | 18 | 40.2 | 38.1 | 15.9 | | | M10 | UCFX05 UCFX05-16 UCF305 | UCX05 UCX05-16 UC305 | 1.2 1.2 1.3 | 19.5 | 11.3 | 13.9 | | |
| 1 | 110 | 29 | 80 | 16 | 13 | 16 | 39 | 38 | 15 | | | M14 | UCF305-16 UCF206-18 | UC305-16 UC206-18 | 1.3 1.1 | 21.2 | 10.9 | 12.6 | | |
| 1 1/8 | 108 | 31 | 83 | 12 | 13 | 18 | 40.2 | 38.1 | 15.9 | | | M10 | UCF206 UCF206-19 UCF206-20 | UC206 UC206-19 UC206-20 | 1.1 1.1 1.1 | 19.5 | 11.3 | 13.9 | | |
| 30 | 117 | 34 | 92 | 16 | 14 | 19 | 44.4 | 42.9 | 17.5 | | | M14 | UCFX06 UCFX06-19 UCFX06-20 | UCX06 UCX06-19 UCX06-20 | 1.6 1.6 1.6 | 25.7 | 15.4 | 13.9 | | |
| 1 1/4 | 125 | 32 | 95 | 16 | 15 | 18 | 44 | 43 | 17 | | | M14 | UCF306 UCF207-20 UCF207-21 UCF207-22 UCF207 | UC306 UC207-20 UC207-21 UC207-22 UC207 | 1.9 1.5 1.5 1.5 1.5 | 26.7 | 15.0 | 13.3 | | |
| 1 1/4 | 117 | 34 | 92 | 14 | 15 | 19 | 44.4 | 42.9 | 17.5 | | | M12 | UCF207 UCFX07-22 UCFX07 UCFX07-23 | UC207 UCX07-22 UCX07 UCX07-23 | 1.5 2.0 2.0 2.0 | 25.7 | 15.4 | 13.9 | | |
| 35 | 130 | 38 | 102 | 16 | 14 | 21 | 51.2 | 49.2 | 19 | | | M14 | UCFX07-22 UCFX07 UCFX07-23 | UCX07-22 UCX07 UCX07-23 | 2.0 2.0 2.0 | 29.1 | 17.8 | 14.0 | | |
| 1 7/16 | 135 | 36 | 100 | 19 | 16 | 20 | 49 | 48 | 19 | | | M16 | UCF307 UCF208-24 UCF208-25 UCF208 | UC307 UC208-24 UC208-25 UC208 | 2.3 1.9 1.9 1.9 | 33.4 | 19.3 | 13.2 | | |
| 1 1/2 | 137 | 40 | 105 | 19 | 14 | 22 | 52.2 | 49.2 | 19 | | | M16 | UCFX08-24 UCFX08 UCF308-24 UCF308 | UCX08-24 UCX08 UC308-24 UC308 | 2.4 2.4 3.1 3.1 | 34.1 | 21.3 | 14.0 | | |
| 1 9/16 | 130 | 36 | 102 | 16 | 15 | 21 | 51.2 | 49.2 | 19 | | | M14 | UCF208-24 UCF208-25 UCF208 | UC208-24 UC208-25 UC208 | 1.9 1.9 1.9 | 29.1 | 17.8 | 14.0 | | |
| 1 1/2 | 137 | 40 | 105 | 19 | 14 | 22 | 52.2 | 49.2 | 19 | | | M16 | UCFX08-24 UCFX08 UCF308-24 UCF308 | UCX08-24 UCX08 UC308-24 UC308 | 2.4 2.4 3.1 3.1 | 34.1 | 21.3 | 14.0 | | |
| 1 1/2 | 150 | 40 | 112 | 19 | 17 | 23 | 56 | 52 | 19 | | | M16 | UCF209-26 UCF209-27 UCF209-28 UCF209 | UC209-26 UC209-27 UC209-28 UC209 | 2.2 2.2 2.2 2.2 | 40.7 | 24.0 | 13.2 | | |
| 1 5/8 | 137 | 38 | 105 | 16 | 16 | 22 | 52.2 | 49.2 | 19 | | | M14 | UCF209-26 UCF209-27 UCF209-28 UCF209 | UC209-26 UC209-27 UC209-28 UC209 | 2.2 2.2 2.2 2.2 | 34.1 | 21.3 | 14.0 | | |
| 1 3/4 | 143 | 40 | 111 | 19 | 14 | 23 | 55.6 | 51.6 | 19 | | | M16 | UCFX09-28 UCFX09 | UCX09-28 UCX09 | 2.7 2.7 | 35.1 | 23.3 | 14.4 | | |

Tipo Brida Cuadrada

UCF

Agujero cilíndrico (con tornillo fijador)

d 45 ~ (75) mm



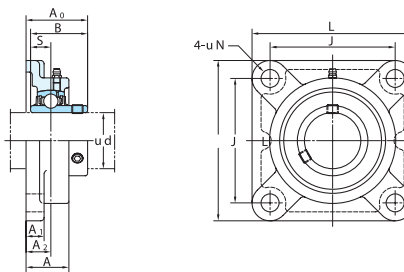
| Diámetro Eje mm pulg | Dimensiones pulg. mm | | | | | | | | | | | | | | | | Perno pulg. mm | No. Unidad | Estándar No. Alojamiento | Masa kg | Capacidad Carga Básica kN | | Factor f ₀ |
|-------------------------|-------------------------|---------|---------|---------|-------|-------|----------------|----------------|-------|-------|-----------|-----------|----------|----------|------|------|----------------------|------------|--------------------------|---------|---------------------------|-----------------|-----------------------|
| | L | A | A | N | A | A | A ₂ | A ₀ | B | S | S | S | S | S | S | S | | | | | C _r | C _{0r} | |
| 45 | 1 3/4 | 6 5/16 | 1 23/32 | 4 59/64 | 3/4 | 23/32 | 63/64 | 2 3/8 | 2.244 | 0.866 | 5/8 | UCF309-28 | F309 | UC309-28 | 4.0 | 48.9 | 29.5 | 13.3 | | | | | |
| | 1 7/8 | 160 | 44 | 125 | 19 | 18 | 25 | 60 | 57 | 22 | M16 | UCF309 | | UC309 | 4.0 | | | | | | | | |
| 50 | 1 15/16 | 5 5/8 | 1 9/16 | 4 3/8 | 5/8 | 55/64 | 2 3/32 | 2.031 | 0.748 | 1/2 | UCF210-30 | F210 | UC210-30 | 2.5 | 35.1 | 23.3 | 14.4 | | | | | | |
| | 2 | 143 | 40 | 111 | 16 | 16 | 22 | 54.6 | 51.6 | 19 | M14 | UCF210 | | UC210 | 2.5 | | | | | | | | |
| 50 | 1 15/16 | 6 3/8 | 1 23/32 | 5 1/8 | 3/4 | 25/32 | 1 1/32 | 2.189 | 0.874 | 5/8 | UCF10-31 | FX10 | UCX10-31 | 3.7 | 43.4 | 29.4 | 14.4 | | | | | | |
| | 2 | 162 | 44 | 130 | 19 | 20 | 26 | 59.4 | 55.6 | 22.2 | M16 | UCF10 | | UCX10 | 3.7 | | | | | | | | |
| 50 | — | 6 7/8 | 1 7/8 | 5 13/64 | 29/32 | 3/4 | 1 7/64 | 2 3/8 | 2.402 | 0.866 | 3/4 | UCF310 | F310 | UC310 | 5.1 | 62.0 | 38.3 | 13.2 | | | | | |
| | 2 | 175 | 48 | 132 | 23 | 19 | 28 | 67 | 61 | 22 | M20 | UCF310 | | UC310 | 5.1 | | | | | | | | |
| 55 | 2 1/8 | 6 3/8 | 1 11/16 | 5 1/8 | 3/4 | 23/32 | 63/64 | 2 3/16 | 2.189 | 0.874 | 5/8 | UCF211-32 | F211 | UC211-32 | 3.4 | 43.4 | 29.4 | 14.4 | | | | | |
| | 2 3/16 | 162 | 43 | 130 | 19 | 18 | 25 | 58.4 | 55.6 | 22.2 | M16 | UCF211 | | UC211 | 3.4 | | | | | | | | |
| 55 | 2 3/16 | 6 7/8 | 1 15/16 | 5 5/8 | 3/4 | 25/32 | 1 9/64 | 2 23/32 | 2.563 | 1.000 | 5/8 | UCFX11 | FX11 | UCX11 | 4.9 | 52.4 | 36.2 | 14.4 | | | | | |
| | 2 1/4 | 175 | 49 | 143 | 19 | 20 | 29 | 68.7 | 65.1 | 25.4 | M16 | UCFX11-35 | | UCX11-35 | 4.9 | | | | | | | | |
| 55 | 2 | 7 9/32 | 2 1/16 | 5 33/64 | 29/32 | 25/32 | 1 3/16 | 2 25/32 | 2.598 | 0.984 | 3/4 | UCF311-32 | F311 | UC311-32 | 5.6 | 71.6 | 45.0 | 13.2 | | | | | |
| | 2 1/4 | 185 | 52 | 140 | 23 | 20 | 30 | 71 | 66 | 25 | M20 | UCF311 | | UC311 | 5.6 | | | | | | | | |
| 60 | 2 1/4 | 6 7/8 | 1 7/8 | 5 5/8 | 3/4 | 23/32 | 1 9/64 | 2 23/32 | 2.563 | 1.000 | 5/8 | UCF212-36 | F212 | UC212-36 | 4.2 | 52.4 | 36.2 | 14.4 | | | | | |
| | 2 3/8 | 175 | 48 | 143 | 19 | 18 | 29 | 68.7 | 65.1 | 25.4 | M16 | UCF212 | | UC212 | 4.2 | | | | | | | | |
| 60 | 2 7/16 | 7 3/8 | 2 5/16 | 5 55/64 | 3/4 | 13/16 | 1 11/32 | 2 29/32 | 2.563 | 1.000 | 5/8 | UCFX12 | FX12 | UCX12 | 5.7 | 57.2 | 40.1 | 14.4 | | | | | |
| | 2 7/16 | 187 | 59 | 149 | 19 | 21 | 34 | 73.7 | 65.1 | 25.4 | M16 | UCFX12-39 | | UCX12-39 | 5.7 | | | | | | | | |
| 60 | — | 195 | 56 | 150 | 23 | 22 | 33 | 78 | 71 | 26 | M20 | UCF312 | F312 | UC312 | 6.9 | 81.9 | 52.2 | 13.2 | | | | | |
| | 2 1/2 | 7 3/8 | 1 31/32 | 5 55/64 | 3/4 | 7/8 | 1 3/16 | 2 3/4 | 2.563 | 1.000 | 5/8 | UCF213-40 | F213 | UC213-40 | 5.2 | 57.2 | 40.1 | 14.4 | | | | | |
| 65 | 2 1/2 | 7 3/8 | 2 5/16 | 5 55/64 | 3/4 | 13/16 | 1 11/32 | 3 3/32 | 2.937 | 1.189 | 5/8 | UCFX13-40 | FX13 | UCX13-40 | 6.3 | 62.2 | 44.1 | 14.5 | | | | | |
| | 2 1/2 | 187 | 59 | 149 | 19 | 21 | 34 | 78.4 | 74.6 | 30.2 | M16 | UCFX13 | | UCX13 | 6.3 | | | | | | | | |
| 65 | 2 1/2 | 8 3/16 | 2 9/32 | 6 17/32 | 29/32 | 7/8 | 1 19/64 | 3 1/16 | 2.953 | 1.181 | 3/4 | UCF313-40 | F313 | UC313-40 | 7.8 | 92.7 | 59.9 | 13.2 | | | | | |
| | 2 1/2 | 208 | 58 | 166 | 23 | 22 | 33 | 78 | 75 | 30 | M20 | UCF313 | | UC313 | 7.8 | | | | | | | | |
| 70 | 2 3/4 | 7 19/32 | 2 1/8 | 5 63/64 | 3/4 | 7/8 | 1 7/32 | 2 31/32 | 2.937 | 1.189 | 5/8 | UCF214-44 | F214 | UC214-44 | 5.9 | 62.2 | 44.1 | 14.5 | | | | | |
| | 2 3/4 | 193 | 54 | 152 | 19 | 22 | 31 | 75.4 | 74.6 | 30.2 | M16 | UCF214 | | UC214 | 5.9 | | | | | | | | |
| 70 | 2 3/4 | 7 3/4 | 2 3/8 | 5 63/64 | 29/32 | 7/8 | 1 29/64 | 3 3/32 | 3.063 | 1.331 | 3/4 | UCFX14-44 | FX14 | UCX14-44 | 7.0 | 67.4 | 48.3 | 14.5 | | | | | |
| | 2 3/4 | 197 | 60 | 152 | 23 | 22 | 37 | 81.5 | 77.8 | 33.3 | M20 | UCFX14 | | UCX14 | 7.0 | | | | | | | | |
| 75 | 2 3/4 | 8 29/32 | 2 15/32 | 7 1/64 | 63/64 | 31/32 | 1 27/64 | 3 3/16 | 3.071 | 1.299 | 7/8 | UCF314-44 | F314 | UC314-44 | 10.1 | 104 | 68.2 | 13.2 | | | | | |
| | 2 3/4 | 226 | 61 | 178 | 25 | 25 | 36 | 81 | 78 | 33 | M22 | UCF314 | | UC314 | 10.1 | | | | | | | | |
| 75 | 2 15/16 | 7 7/8 | 2 7/32 | 6 17/64 | 3/4 | 7/8 | 1 11/32 | 3 3/32 | 3.063 | 1.311 | 5/8 | UCF215-47 | F215 | UC215-47 | 6.4 | 67.4 | 48.3 | 14.5 | | | | | |
| | 2 15/16 | 200 | 56 | 159 | 19 | 22 | 34 | 78.5 | 77.8 | 33.3 | M16 | UCF215 | | UC215 | 6.4 | | | | | | | | |
| 75 | 2 15/16 | 7 3/4 | 2 11/16 | 5 63/64 | 29/32 | 15/16 | 1 9/16 | 3 17/32 | 3.252 | 1.311 | 3/4 | UCFX15-47 | FX15 | UCX15-47 | 8.4 | 72.7 | 53.0 | 14.6 | | | | | |
| | 2 15/16 | 197 | 68 | 152 | 23 | 24 | 40 | 89.3 | 82.6 | 33.3 | M20 | UCFX15-48 | | UCX15-48 | 8.4 | | | | | | | | |

Tipo Brida Cuadrada

UCF

Agujero cilíndrico (con tornillo fijador)

d (75) ~ 140 mm



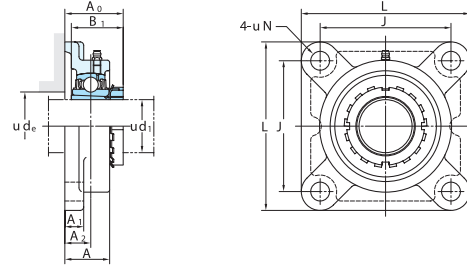
| Diámetro Eje mm pulg | Dimensiones | | | | | | | | | | | Perno | No. Unidad | Estándar No. Alojamiento | No. Inserto | Masa kg | Capacidad Carga Básica kN | | Factor |
|-------------------------|-------------|----------|---------|----------|---------|---------|---------|---------|-------|-------|-------|-----------|------------|--------------------------|-------------|---------|---------------------------|-----|--------|
| | L | A | J | N | A1 | A2 | A0 | B | S | mm | pulg. | | | | | | Cr | Cor | |
| 75 | 2 15/16 | 9 9/32 | 2 19/32 | 7 1/4 | 63/64 | 31/32 | 1 17/32 | 3 1/2 | 3.228 | 1.260 | 7/8 | UCF315-47 | UC315-47 | 11.6 | 113 | 77.2 | 13.2 | | |
| | 3 | 236 | 66 | 184 | 25 | 25 | 39 | 89 | 82 | 32 | M22 | UCF315 | UC315 | 11.6 | 113 | 77.2 | 13.2 | | |
| | 3 1/8 | 8 3/16 | 2 9/32 | 6 1/2 | 29/32 | 7/8 | 1 11/32 | 3 5/32 | 3.252 | 1.311 | 3/4 | UCF315-48 | UC315-48 | 11.6 | 113 | 77.2 | 13.2 | | |
| 80 | — | 208 | 58 | 165 | 23 | 34 | 34 | 83.3 | 82.6 | 33.3 | M20 | UCF216-50 | UC216-50 | 7.3 | 72.7 | 53.0 | 14.6 | | |
| | — | 214 | 70 | 171 | 23 | 24 | 40 | 91.6 | 85.7 | 34.1 | M20 | UCFX16 | UCX16 | 9.4 | 84.0 | 61.9 | 14.5 | | |
| | — | 9 27/32 | 2 11/16 | 7 23/32 | 1 7/32 | 1 1/16 | 1 1/2 | 3 17/32 | 3.386 | 1.339 | 1 | UCF316 | UC316 | 12.8 | 123 | 86.7 | 13.3 | | |
| 85 | 3 1/4 | 8 21/32 | 2 15/32 | 6 37/64 | 29/32 | 15/16 | 1 13/32 | 3 7/16 | 3.374 | 1.343 | 3/4 | UCF217-52 | UC217-52 | 8.9 | 84.0 | 61.9 | 14.5 | | |
| | — | 220 | 63 | 175 | 23 | 24 | 36 | 87.6 | 85.7 | 34.1 | M20 | UCF217 | UC217 | 8.9 | 84.0 | 61.9 | 14.5 | | |
| | 3 7/16 | 8 7/16 | 2 3/4 | 6 47/64 | 29/32 | 15/16 | 1 9/16 | 3 25/32 | 3.780 | 1.563 | 3/4 | UCFX17 | UCX17 | 10.8 | 96.1 | 71.5 | 14.5 | | |
| 90 | — | 214 | 70 | 171 | 23 | 24 | 40 | 96.3 | 96 | 39.7 | M20 | UCFX17-55 | UCX17-55 | 10.8 | 96.1 | 71.5 | 14.5 | | |
| | — | 10 1/4 | 2 29/32 | 8 1/32 | 1 7/32 | 1 1/16 | 1 47/64 | 3 15/16 | 3.780 | 1.575 | 1 | UCF317 | UC317 | 15.3 | 133 | 96.8 | 13.3 | | |
| | 3 1/2 | 9 1/4 | 2 11/16 | 7 23/64 | 29/32 | 31/32 | 1 9/16 | 3 25/32 | 3.780 | 1.563 | 3/4 | UCF218-56 | UC218-56 | 11.4 | 96.1 | 71.5 | 14.5 | | |
| 95 | — | 235 | 68 | 187 | 23 | 25 | 40 | 96.3 | 96 | 39.7 | M20 | UCF218 | UC218 | 11.4 | 96.1 | 71.5 | 14.5 | | |
| | — | 8 7/16 | 3 | 6 47/64 | 29/32 | 15/16 | 1 49/64 | 4 3/16 | 4.094 | 1.689 | 3/4 | UCFX18 | UCX18 | 11.9 | 109 | 81.9 | 14.4 | | |
| | 3 1/2 | 11 1/32 | 3 | 8 1/2 | 1 3/8 | 1 3/16 | 1 47/64 | 3 9/16 | 3.780 | 1.575 | 1 1/8 | UCF318-56 | UC318-56 | 18.9 | 143 | 107 | 13.3 | | |
| 100 | — | 280 | 76 | 216 | 35 | 30 | 44 | 100 | 96 | 40 | M30 | UCF318 | UC318 | 18.9 | 143 | 107 | 13.3 | | |
| | — | 11 13/32 | 3 11/16 | 8 31/32 | 1 3/8 | 1 3/16 | 2 27/64 | 4 3/4 | 4.055 | 1.614 | 1 1/8 | UCF319 | UC319 | 21.6 | 153 | 119 | 13.3 | | |
| | — | 290 | 94 | 228 | 35 | 30 | 59 | 121 | 103 | 41 | M30 | UCFX20 | UCX20 | 19.4 | 133 | 105 | 14.4 | | |
| 105 | 3 15/16 | 268 | 97 | 211 | 31 | 28 | 59 | 127.3 | 117.5 | 49.2 | M27 | UCFX20-63 | UCX20-63 | 19.4 | 133 | 105 | 14.4 | | |
| | 4 | 12 7/32 | 3 11/16 | 9 17/32 | 1 1/2 | 1 1/4 | 2 21/64 | 5 | 4.626 | 1.937 | 1 | UCFX20-64 | UCX20-64 | 19.4 | 133 | 105 | 14.4 | | |
| | 3 15/16 | 310 | 94 | 242 | 38 | 32 | 59 | 125 | 108 | 42 | M33 | UCF320 | UC320 | 25.8 | 173 | 141 | 13.2 | | |
| 110 | — | 310 | 94 | 242 | 38 | 32 | 59 | 125 | 108 | 42 | M33 | UCF320-63 | UC320-63 | 25.8 | 173 | 141 | 13.2 | | |
| | — | 12 7/32 | 3 11/16 | 9 17/32 | 1 1/2 | 1 1/4 | 2 21/64 | 5 | 4.409 | 1.732 | 1 1/4 | UCF321 | UC321 | 30.2 | 184 | 153 | 13.2 | | |
| | — | 310 | 94 | 242 | 38 | 32 | 59 | 127 | 112 | 44 | M33 | UCF322 | UC322 | 35.3 | 205 | 180 | 13.2 | | |
| 120 | — | 340 | 96 | 266 | 41 | 35 | 60 | 131 | 117 | 46 | M36 | UCF324 | UC324 | 47.3 | 207 | 185 | 13.5 | | |
| | — | 14 9/16 | 4 11/32 | 11 27/64 | 1 39/64 | 1 9/16 | 2 9/16 | 5 1/2 | 4.961 | 2.008 | 1 3/8 | UCF324 | UC324 | 47.3 | 207 | 185 | 13.5 | | |
| | — | 370 | 110 | 290 | 41 | 40 | 65 | 140 | 126 | 51 | M36 | UCF326 | UC326 | 65.5 | 229 | 214 | 13.6 | | |
| 130 | — | 410 | 115 | 320 | 41 | 45 | 65 | 146 | 135 | 54 | M36 | UCF326 | UC326 | 65.5 | 229 | 214 | 13.6 | | |
| | — | 16 5/32 | 4 17/32 | 12 19/32 | 1 39/64 | 1 25/32 | 2 9/16 | 5 3/4 | 5.315 | 2.126 | 1 3/8 | UCF326 | UC326 | 65.5 | 229 | 214 | 13.6 | | |
| | — | 17 23/32 | 4 29/32 | 13 25/32 | 1 39/64 | 2 5/32 | 2 61/64 | 6 1/32 | 5.709 | 2.323 | 1 3/8 | UCF328 | UC328 | 93.4 | 253 | 246 | 13.6 | | |
| 140 | — | 450 | 125 | 350 | 41 | 55 | 75 | 161 | 145 | 59 | M36 | UCF328 | UC328 | 93.4 | 253 | 246 | 13.6 | | |
| | — | 450 | 125 | 350 | 41 | 55 | 75 | 161 | 145 | 59 | M36 | UCF328 | UC328 | 93.4 | 253 | 246 | 13.6 | | |

Tipo Brida Cuadrada

UKF

Agujero cónico (con kit de montaje)

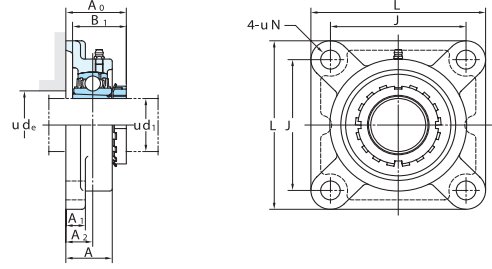
d_1 20 ~ (50) mm



| Diámetro Eje mm pulg | Dimensiones mm pulg | | | | | | | | | | | | | Perno | | Estándar | | No. Injerto | Kit de Montaje | Masa kg | Capacidad Carga Básica KN | | Factor f_0 |
|-------------------------|------------------------|---------|---------|---------|-------|-------|-------------------|------------------------------|------------------------------|------------------------------|--------------|--------|---------|-----------------|----------------------------------|-----------------------------------|-----------------|-------------|----------------|------------|------------------------------|--|-----------------|
| | L | A | J | N | A | 1 | A ₂ | A ₀ ¹⁾ | B ₁ ¹⁾ | B ₁ ¹⁾ | de (min.) | pulg. | mm | No. Alojamiento | No. Unidad | C _r | C _{0r} | | | | | | |
| 20 | 3/4 | 1 1/16 | 2 3/4 | 15/32 | 1/2 | 5/8 | 1 11/32 (1 13/32) | 1 5/8 (1 3/8) | 1 3/16 | 30 | 3/8 | M10 | UKF205 | F205 | UK205 | HE305X(HE2305X) H305X(H2305X) | 0.87 | 14.0 | 7.85 | 13.9 | | | |
| | 3/4 | 4 1/4 | 1 3/16 | 3 17/64 | 15/32 | 1/2 | 45/64 | 1 15/32 | 1 3/8 | 30 | 3/8 | M10 | UKFX05 | FX05 | UKX05 | HE2305X | 1.2 | 19.5 | 11.3 | 13.9 | | | |
| | 3/4 | 4 11/32 | 1 5/32 | 3 5/32 | 5/8 | 1/2 | 5/8 | 1 15/32 | 1 3/8 | — | — | M14 | UKF305 | F305 | UK305 | H2305X H2305X | 1.4 | 21.2 | 10.9 | 12.6 | | | |
| | 1 | 108 | 31 | 83 | 12 | 13 | 18 | 37.5 (39.5) | 31 (38) | 36 | 36 | M14 | UKF206 | F206 | UK206 | H306X(H2306X) HE306X(HE2306X) | 1.3 | 19.5 | 11.3 | 13.9 | | | |
| 25 | 1 | 117 | 34 | 92 | 16 | 14 | 19 | 40 | 38 | 36 | M14 | UKFX06 | FX06 | UKX06 | HE2306X | 1.6 | 25.7 | 15.4 | 13.9 | | | | |
| | 1 | 125 | 32 | 95 | 16 | 15 | 18 | 41 | 38 | — | M14 | UKF306 | F306 | UK306 | HE2306X | 1.9 | 26.7 | 15.0 | 13.3 | | | | |
| | 1 1/8 | 4 19/32 | 1 11/32 | 3 5/8 | 35/64 | 19/32 | 3/4 | 1 3/8 (1 11/16) | 1 3/8 (1 11/16) | 1 5/8 | 41 | M12 | UKF207 | F207 | UK207 | H5307X(HS2307X) H307X(H2307X) | 1.6 | 25.7 | 15.4 | 13.9 | | | |
| | 1 1/8 | 117 | 34 | 92 | 14 | 15 | 19 | 41 (43) | 35 (43) | 41 | — | M14 | UKFX07 | FX07 | UKX07 | H52307X | 2.0 | 29.1 | 17.8 | 14.0 | | | |
| 30 | 1 1/8 | 5 1/8 | 1 13/32 | 3 15/16 | 3/4 | 5/8 | 25/32 | 1 25/32 | 1 11/16 | — | — | M16 | UKF307 | F307 | UK307 | HE2307X | 2.3 | 33.4 | 19.3 | 13.2 | | | |
| | 1 1/4 | 130 | 38 | 102 | 16 | 14 | 21 | 43.5 | 43 | 41 | — | M14 | UKFX08 | FX08 | UKX08 | HE2308X | 2.3 | 34.1 | 21.3 | 14.0 | | | |
| | 1 1/4 | 135 | 36 | 100 | 19 | 16 | 20 | 45.5 | 43 | — | — | M16 | UKF208 | F208 | UK208 | H308X(HE2308X) HS308X(HS2308X) | 1.9 | 29.1 | 17.8 | 14.0 | | | |
| | 1 3/8 | 130 | 36 | 102 | 16 | 15 | 21 | 44.5 (48) | 36 (46) | 46 | — | M14 | UKFX08 | FX08 | UKX08 | HE2308X | 2.3 | 34.1 | 21.3 | 14.0 | | | |
| 35 | 1 1/4 | 5 13/32 | 1 9/16 | 4 9/64 | 3/4 | 9/16 | 55/64 | 1 27/32 | 1 13/16 | 1 13/16 | 46 | M16 | UKFX08 | FX08 | UKX08 | HE2308X | 2.3 | 40.7 | 24.0 | 13.2 | | | |
| | 1 3/8 | 137 | 40 | 105 | 19 | 14 | 22 | 46.5 | 46 | 46 | — | M16 | UKF308 | F308 | UK308 | HE2308X | 3.1 | 40.7 | 24.0 | 13.2 | | | |
| | 1 1/4 | 5 29/32 | 1 9/16 | 4 13/32 | 3/4 | 21/32 | 29/32 | 2 | 1 13/16 | — | — | M16 | UKFX08 | FX08 | UKX08 | HE2308X | 3.1 | 40.7 | 24.0 | 13.2 | | | |
| | 1 3/8 | 150 | 40 | 112 | 19 | 17 | 23 | 50.5 | 46 | — | — | M16 | UKF209 | F209 | UK209 | HE309X(HE2309X) H309X(H2309X) | 2.3 | 34.1 | 21.3 | 14.0 | | | |
| 40 | 1 1/2 | 5 13/32 | 1 1/2 | 4 9/64 | 5/8 | 55/64 | 1 7/8 (2) | 1 17/32 (1 31/32) | 2 1/16 | 52 | M14 | UKF209 | F209 | UK209 | HE309X(HE2309X) H309X(H2309X) | 2.3 | 34.1 | 21.3 | 14.0 | | | | |
| | 1 5/8 | 137 | 38 | 105 | 16 | 16 | 22 | 47.5 (51) | 39 (50) | — | — | M14 | UKFX09 | FX09 | UKX09 | HE2309X | 2.7 | 35.1 | 23.3 | 14.4 | | | |
| | 1 1/2 | 5 5/8 | 1 9/16 | 4 3/8 | 3/4 | 9/16 | 29/32 | 1 29/32 | 1 31/32 | 2 1/16 | 52 | M16 | UKF309 | F309 | UK309 | HE2309X | 4.1 | 48.9 | 29.5 | 13.3 | | | |
| | 1 5/8 | 160 | 44 | 125 | 19 | 18 | 25 | 55 | 50 | — | — | M16 | UKFX09 | FX09 | UKX09 | HE2309X | 4.1 | 48.9 | 29.5 | 13.3 | | | |
| 45 | 1 3/4 | 5 5/8 | 1 9/16 | 4 3/8 | 5/8 | 55/64 | 1 29/32 (2 1/16) | 1 21/32 (2 5/32) | 2 9/32 | 58 | M14 | UKF210 | F210 | UK210 | HE310X(HE2310X) H310X(H2310X) | 2.6 | 35.1 | 23.3 | 14.4 | | | | |
| | 1 3/4 | 143 | 40 | 111 | 16 | 16 | 22 | 48.5 (52) | 42 (55) | 58 | — | M16 | UKFX10 | FX10 | UKX10 | HE2310X | 3.6 | 43.4 | 29.4 | 14.4 | | | |
| | 1 3/4 | 6 5/16 | 1 23/32 | 4 59/64 | 3/4 | 23/32 | 63/64 | 2 5/32 | 1 31/32 | — | — | M16 | UKF310 | F310 | UK310 | HE2310X | 4.1 | 48.9 | 29.5 | 13.3 | | | |
| | 1 5/8 | 160 | 44 | 125 | 19 | 18 | 25 | 55 | 50 | — | — | M16 | UKFX10 | FX10 | UKX10 | HE2310X | 4.1 | 48.9 | 29.5 | 13.3 | | | |
| 50 | 1 3/4 | 5 5/8 | 1 9/16 | 4 3/8 | 5/8 | 55/64 | 1 29/32 (2 1/16) | 1 21/32 (2 5/32) | 2 9/32 | 58 | M14 | UKF210 | F210 | UK210 | HE310X(HE2310X) H310X(H2310X) | 2.6 | 35.1 | 23.3 | 14.4 | | | | |
| | 1 3/4 | 143 | 40 | 111 | 16 | 16 | 22 | 48.5 (52) | 42 (55) | 58 | — | M16 | UKFX10 | FX10 | UKX10 | HE2310X | 3.6 | 43.4 | 29.4 | 14.4 | | | |
| | 1 3/4 | 162 | 44 | 130 | 19 | 20 | 26 | 53.5 | 55 | 58 | — | M16 | UKF310 | F310 | UK310 | HE2310X | 4.1 | 48.9 | 29.5 | 13.3 | | | |
| | 1 5/8 | 175 | 48 | 132 | 23 | 19 | 28 | 60 | 55 | — | — | M20 | UKFX10 | FX10 | UKX10 | HE2310X | 4.1 | 48.9 | 29.5 | 13.3 | | | |
| 50 | 1 7/8 | 6 3/8 | 1 11/16 | 5 1/8 | 3/4 | 23/32 | 63/64 | 2 1/8 (2 1/4) | 1 25/32 (2 5/16) | 2 17/32 | 64 | M16 | UKF211 | F211 | UK211 | H5311X(HS2311X) H311X(H2311X) | 3.5 | 43.4 | 29.4 | 14.4 | | | |
| | 2 | 162 | 43 | 130 | 19 | 18 | 25 | 52.5 (57) | 45 (59) | — | — | M16 | UKFX211 | FX211 | UKX211 | HE311X(HE2311X) | 3.5 | 43.4 | 29.4 | 14.4 | | | |

Tipo Brida Cuadrada

UKF
 Agujero cónico (con kit de montaje)
 $d_1 (50) \sim 85 \text{ mm}$



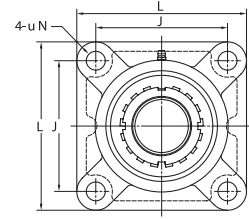
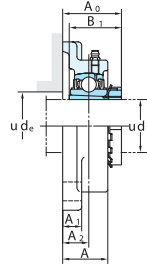
| Diámetro Eje mm | Dimensiones pulg. | | | | | | | | | | Perno pulg. | Estándar | | No. Inserto | Kit de Montaje | Masa kg | Capacidad Carga Básica kN | | Factor fo | |
|-----------------|-------------------|----------|---------|---------|--------|--------|---------|------------------|------------------|-----------|-------------|------------|-----------------|-------------|----------------|---------|---------------------------|------|-----------|------|
| | L | A | J | N | A | A1 | A2 | A0 ¹⁾ | B1 ¹⁾ | de (min.) | | No. Unidad | No. Alojamiento | | | | Cr | Cor | | |
| 50 | 1 7/8 | 6 7/8 | 1 15/16 | 5 5/8 | 3/4 | 25/32 | 1 9/64 | 2 1/4 | 2 5/16 | 59 | 64 | 5/8 | UKFX11 | FX11 | UKX11 | H2311X | 4.6 | 52.4 | 36.2 | 14.4 |
| | 2 | 175 | 49 | 143 | 19 | 20 | 29 | 57.5 | 59 | 64 | M16 | | | | HE2311X | 4.6 | | | | |
| | 1 7/8 | 7 9/32 | 2 1/16 | 5 33/64 | 29/32 | 25/32 | 1 3/16 | 2 1/2 | 2 5/16 | 59 | - | 3/4 | UKF311 | F311 | UK311 | H2311X | 5.9 | 71.6 | 45.0 | 13.2 |
| 55 | 2 | 185 | 52 | 140 | 23 | 20 | 30 | 63.5 | 59 | - | M20 | | | | HE2311X | 5.9 | | | | |
| | 2 1/8 | 175 | 48 | 143 | 19 | 18 | 29 | 58.5(65.5) | 47(62) | 69 | M16 | UKF212 | F212 | UK212 | H2312X | 4.1 | 52.4 | 36.2 | 14.4 | |
| | 2 1/8 | 7 3/8 | 2 5/16 | 5 55/64 | 3/4 | 13/16 | 1 11/32 | 2 9/16 | 2 7/16 | 62 | 69 | 5/8 | UKFX12 | FX12 | UKX12 | H2312X | 5.5 | 57.2 | 40.1 | 14.4 |
| 60 | 2 1/8 | 187 | 59 | 149 | 19 | 21 | 34 | 65 | 62 | 69 | M16 | | | | HE2312X | 5.5 | | | | |
| | 2 1/8 | 7 11/16 | 2 7/32 | 5 29/32 | 29/32 | 7/8 | 1 19/64 | 2 3/4 | 2 7/16 | 62 | - | 3/4 | UKF312 | F312 | UK312 | H2312X | 6.8 | 81.9 | 52.2 | 13.2 |
| | 2 1/4 | 195 | 56 | 150 | 23 | 22 | 33 | 69.5 | 62 | - | M20 | | | | HE2312X | 6.8 | | | | |
| 65 | 2 1/4 | 187 | 50 | 149 | 19 | 22 | 30 | 62(67.5) | 50(65) | 74 | M16 | UKF213 | F213 | UK213 | H2313X | 5.1 | 57.2 | 40.1 | 14.4 | |
| | 2 3/8 | 187 | 59 | 149 | 19 | 21 | 34 | 68 | 65 | 74 | M16 | | | | HE2313X | 6.0 | 62.2 | 44.1 | 14.5 | |
| | 2 1/4 | 8 3/16 | 2 9/32 | 6 17/32 | 29/32 | 7/8 | 1 19/64 | 2 13/16 | 2 9/16 | 65 | - | 3/4 | UKFX13 | FX13 | UKX13 | H2313X | 6.0 | 62.2 | 44.1 | 14.5 |
| 70 | 2 3/8 | 208 | 58 | 166 | 23 | 22 | 33 | 71.5 | 65 | - | M20 | | | | HE2313X | 7.9 | 92.7 | 59.9 | 13.2 | |
| | 2 1/2 | 7 7/8 | 2 7/32 | 6 17/64 | 3/4 | 7/8 | 1 11/32 | 2 23/32(2 15/16) | 2 7/32(2 7/8) | 85 | M16 | UKF215 | F215 | UK215 | H2315X | 6.5 | 67.4 | 48.3 | 14.5 | |
| | 2 1/2 | 200 | 56 | 159 | 19 | 22 | 34 | 69(74.5) | 55(73) | 85 | M16 | | | | HE2315X | 6.5 | 67.4 | 48.3 | 14.5 | |
| 75 | 2 1/2 | 7 3/4 | 2 11/16 | 5 63/64 | 29/32 | 15/16 | 1 9/16 | 3 | 2 7/8 | 85 | 3/4 | UKFX15 | FX15 | UKX15 | H2315X | 8.1 | 72.7 | 53.0 | 14.6 | |
| | 2 1/2 | 197 | 68 | 152 | 23 | 24 | 40 | 76 | 73 | 85 | M20 | | | | HE2315X | 8.1 | 72.7 | 53.0 | 14.6 | |
| | 2 1/2 | 9 9/32 | 2 19/32 | 7 1/4 | 65/64 | 31/32 | 1 17/32 | 3 7/32 | 2 7/8 | - | 7/8 | UKF315 | F315 | UK315 | H2315X | 11.7 | 113 | 77.2 | 13.2 | |
| 80 | 2 3/4 | 236 | 66 | 184 | 25 | 25 | 39 | 81.5 | 73 | - | M22 | | | | HE2315X | 11.7 | 113 | 77.2 | 13.2 | |
| | 2 3/4 | 8 3/16 | 2 9/32 | 6 1/2 | 29/32 | 7/8 | 1 11/32 | 2 27/32(3 3/32) | 2 5/16(3 1/16) | 90 | M20 | UKF216 | F216 | UK216 | H2316X | 7.6 | 72.7 | 53.0 | 14.6 | |
| | 2 3/4 | 208 | 58 | 165 | 23 | 22 | 34 | 72(78.5) | 59(78) | 90 | M20 | | | | HE2316X | 7.6 | 72.7 | 53.0 | 14.6 | |
| 85 | 2 3/4 | 8 7/16 | 2 3/4 | 6 47/64 | 29/32 | 15/16 | 1 9/16 | 3 1/8 | 3 1/16 | 90 | 3/4 | UKFX16 | FX16 | UKX16 | H2316X | 9.5 | 84.0 | 61.9 | 14.5 | |
| | 2 3/4 | 214 | 70 | 171 | 23 | 24 | 40 | 79 | 78 | 90 | M20 | | | | HE2316X | 9.5 | 84.0 | 61.9 | 14.5 | |
| | 2 3/4 | 9 27/32 | 2 11/16 | 7 23/32 | 1 7/32 | 1 1/16 | 1 1/2 | 3 1/4 | 3 1/16 | - | 1 | UKF316 | F316 | UK316 | H2316X | 12.9 | 123 | 86.7 | 13.3 | |
| 90 | 3 | 250 | 68 | 196 | 31 | 27 | 38 | 82.5 | 78 | - | M27 | | | | HE2316X | 12.9 | 123 | 86.7 | 13.3 | |
| | 3 | 8 21/32 | 2 15/32 | 6 37/64 | 29/32 | 15/16 | 1 13/32 | 3(3 1/4) | 2 15/32(3 7/32) | 96 | M20 | UKF217 | F217 | UK217 | H2317X | 9.0 | 84.0 | 61.9 | 14.5 | |
| | 3 | 220 | 63 | 175 | 23 | 24 | 36 | 76(82.5) | 63(82) | 96 | M20 | | | | HE2316X | 12.9 | 123 | 86.7 | 13.3 | |
| 100 | 3 | 8 7/16 | 2 3/4 | 6 47/64 | 29/32 | 15/16 | 1 9/16 | 3 7/32 | 3 1/32 | 96 | 3/4 | UKFX17 | FX17 | UKX17 | H2317X | 10.4 | 96.1 | 71.5 | 14.5 | |
| | 3 | 214 | 70 | 171 | 23 | 24 | 40 | 82 | 82 | 96 | M20 | | | | HE2317X | 10.4 | 96.1 | 71.5 | 14.5 | |
| | 3 | 10 1/4 | 2 29/32 | 8 1/2 | 1 7/32 | 1 1/16 | 1 47/64 | 3 5/8 | 3 1/32 | - | 1 | UKF317 | F317 | UK317 | H2317X | 15.2 | 133 | 96.8 | 13.3 | |
| 110 | 3 | 260 | 74 | 204 | 31 | 27 | 44 | 92 | 82 | - | M27 | | | | HE2317X | 15.2 | 133 | 96.8 | 13.3 | |
| | 3 | 9 1/4 | 2 11/16 | 7 23/64 | 29/32 | 31/32 | 1 9/16 | 3 7/32(3 17/32) | 2 9/16(3 3/8) | 102 | M20 | UKF218 | F218 | UK218 | H2318X | 11.4 | 96.1 | 71.5 | 14.5 | |
| | 3 | 235 | 68 | 187 | 23 | 25 | 40 | 82(89.5) | 65(86) | 102 | M20 | | | | HE2317X | 15.2 | 133 | 96.8 | 13.3 | |
| 120 | 3 | 8 7/16 | 3 | 6 47/64 | 29/32 | 15/16 | 1 49/64 | 3 15/32 | 3 3/8 | 102 | 3/4 | UKFX18 | FX18 | UKX18 | H2318X | 10.4 | 96.1 | 71.5 | 14.5 | |
| | 3 | 214 | 76 | 171 | 23 | 24 | 45 | 88 | 86 | 102 | M20 | | | | HE2317X | 10.4 | 96.1 | 71.5 | 14.5 | |
| | 3 | 11 1/32 | 3 | 8 1/2 | 1 3/8 | 1 3/16 | 1 47/64 | 3 5/8 | 3 3/8 | - | 1 1/8 | UKF318 | F318 | UK318 | H2318X | 11.4 | 109 | 81.9 | 14.4 | |
| 130 | 3 | 280 | 76 | 216 | 35 | 30 | 44 | 92 | 86 | - | M30 | | | | HE2318X | 11.4 | 109 | 81.9 | 14.4 | |
| | 3 1/4 | 11 13/32 | 3 11/16 | 8 31/32 | 1 3/8 | 1 3/16 | 2 27/64 | 4 3/8 | 3 17/32 | - | 1 1/8 | UKF319 | F319 | UK319 | H2319X | 15.2 | 133 | 96.8 | 13.3 | |
| | 3 1/4 | 290 | 94 | 228 | 35 | 30 | 59 | 111 | 90 | - | M30 | | | | HE2319X | 21.9 | 153 | 119 | 13.3 | |

Tipo Brida Cuadrada

UKF

Agujero cónico (con kit de montaje)

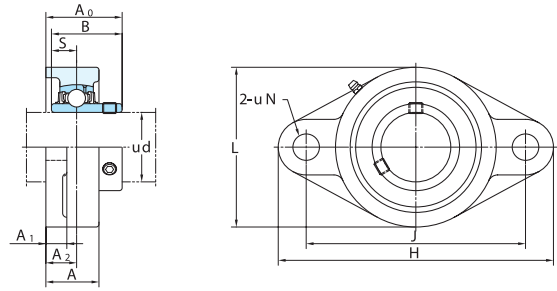
d_1 90 ~ 125 mm



| Diámetro Eje mm | Dimensiones pulg. | | | | | | | | | | | | | Perno pulg. | No. Unidad | Estándar No. Alojamiento | No. Inserto | Kit de Montaje | Masa kg | Capacidad Carga Básica kN | | Factor |
|--------------------|----------------------|----------|---------|----------|---------|---------|----------------|------------------------------|------------------------------|--------------------------|-------|----------------|-----------------|----------------|------------|-----------------------------|-------------|----------------|------------|------------------------------|--|--------|
| | L | A | J | N | A | 1 | A ₂ | A ₀ ¹⁾ | B ₁ ¹⁾ | d _e (min.) | mm | C _r | C _{0r} | | | | | | | f | | |
| 90 | 3 1/2 | 10 9/16 | 3 13/16 | 8 5/16 | 1 7/32 | 1 3/8 | 2 27/64 | 4 37/16 | 3 13/16 | 4 13/32 | 1 | 1 | 18.4 | 133 | 105 | 14.4 | | | | | | |
| | 268 | 97 | 211 | 31 | 28 | 59 | 106 | 97 | 112 | M27 | | 18.4 | | | | 5 | | | | | | |
| 100 | 3 1/2 | 12 7/32 | 3 11/16 | 9 17/32 | 1 1/2 | 1 1/4 | 2 27/64 | 4 7/16 | 3 13/16 | — | 1 1/4 | 25.4 | 173 | 141 | 13.2 | | | | | | | |
| | 310 | 94 | 242 | 38 | 32 | 59 | 113 | 97 | — | M33 | | 25.4 | | | | | | | | | | |
| 110 | 4 | 13 3/8 | 3 25/32 | 10 15/32 | 1 3/8 | 1 3/8 | 2 29/64 | 4 29/32 | 4 1/8 | — | 1 3/8 | 35.2 | 205 | 180 | 13.2 | | | | | | | |
| | 340 | 96 | 266 | 41 | 35 | 60 | 120 | 105 | — | M36 | | 35.2 | | | | 6 | | | | | | |
| 115 | — | 14 9/16 | 4 11/32 | 11 27/64 | 1 39/64 | 1 9/16 | 2 9/16 | 5 1/8 | 4 13/32 | — | 1 3/8 | 47.6 | 207 | 185 | 13 | | | | | | | |
| | 370 | 110 | 290 | 41 | 40 | 65 | 130.5 | 112 | — | M36 | | 47.6 | | | | | | | | | | |
| 125 | 4 1/2 | 16 5/32 | 4 17/32 | 12 19/32 | 1 39/64 | 1 25/32 | 2 9/16 | 5 3/16 | 4 3/4 | — | 1 3/8 | 65.3 | 229 | 214 | 13.6 | | | | | | | |
| | 410 | 115 | 320 | 41 | 45 | 65 | 131.5 | 121 | — | M36 | | 65.3 | | | | | | | | | | |
| 125 | — | 17 23/32 | 4 29/32 | 13 25/32 | 1 39/64 | 2 5/32 | 2 61/64 | 5 13/16 | 5 5/32 | — | 1 3/8 | 93.4 | 253 | 246 | 13 | | | | | | | |
| | 450 | 125 | 350 | 41 | 55 | 75 | 147.5 | 131 | — | M36 | | 93.4 | | | | | | | | | | |

Tipo Brida Romboidal

UCFL Agujero cilíndrico (con tornillo fijador) d (45) ~ (90) mm

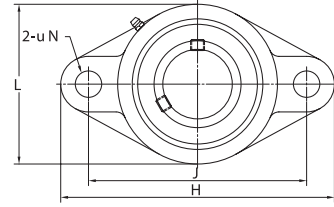
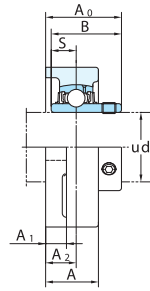


| Diámetro Eje mm pulg d | Dimensiones pulg. mm | | | | | | | | | | | | | Perno pulg. mm | Estándar | | | Capacidad Carga Básica kN | | Factor |
|------------------------------|----------------------------|--------|---------|---------|---------|-------|-------|----------------|----------------|-------|-------|------------|-----------------|----------------------|-------------|------------|----------------|---------------------------------|----------------|--------|
| | H | L | A | J | N | A | 1 | A ₂ | A ₀ | B | S | No. Unidad | No. Alojamiento | | No. Inserto | Masa kg | C _r | C _{0r} | f ₀ | |
| 45 | 1 3/4 | 9 1/16 | 4 29/32 | 1 23/32 | 6 31/32 | 63/64 | 23/32 | 63/64 | 2 3/6 | 2.244 | 0.866 | 7/6 | UCFL309-28 | FL309 | UC309-28 | 3.5 | 48.9 | 29.5 | 13.3 | |
| | 1 7/8 | 230 | 125 | 44 | 177 | 25 | 18 | 25 | 60 | 57 | 22 | M22 | UCFL309 | | UC309 | 3.5 | | | | |
| 50 | 1 15/16 | 7 3/4 | 4 17/32 | 1 9/16 | 6 3/16 | 3/4 | 19/32 | 59/64 | 2 5/32 | 2.031 | 0.748 | 5/6 | UCFL210-30 | FL210 | UC210-30 | 2.2 | 35.1 | 23.3 | 14.4 | |
| | 2 | 197 | 115 | 40 | 157 | 19 | 15 | 22 | 54.6 | 51.6 | 19 | M16 | UCFL210-31 | | UC210-31 | 2.2 | | | | |
| 55 | 1 15/16 | 8 1/2 | 5 1/4 | 1 23/32 | 7 1/4 | 3/4 | 25/32 | 1 1/32 | 2 11/32 | 2.189 | 0.874 | 5/8 | UCFL210-32 | FL210 | UC210-32 | 2.2 | 43.4 | 29.4 | 14.4 | |
| | 2 | 216 | 133 | 44 | 184 | 19 | 20 | 26 | 59.4 | 55.6 | 22.2 | M16 | UCFL210-33 | | UC210-33 | 2.2 | | | | |
| 60 | 2 1/4 | 9 7/16 | 5 1/2 | 1 7/8 | 7 23/64 | 63/64 | 3/4 | 1 7/64 | 2 5/8 | 2.402 | 0.866 | 7/8 | UCFL211-32 | FL211 | UC211-32 | 3.3 | 71.6 | 45.0 | 13.2 | |
| | 2 1/2 | 240 | 140 | 48 | 187 | 25 | 19 | 28 | 67 | 61 | 22 | M22 | UCFL211-33 | | UC211-33 | 3.3 | | | | |
| 65 | 2 3/4 | 10 5/8 | 6 1/2 | 2 1/8 | 8 1/2 | 29/32 | 23/32 | 1 9/64 | 2 29/32 | 2.563 | 1.000 | 3/4 | UCFL212-36 | FL212 | UC212-36 | 4.2 | 52.4 | 36.2 | 14.4 | |
| | 2 7/8 | 270 | 160 | 56 | 212 | 31 | 22 | 33 | 78 | 71 | 26 | M27 | UCFL212-37 | | UC212-37 | 4.2 | | | | |
| 70 | 3 1/8 | 11 3/8 | 7 1/2 | 2 1/4 | 9 1/2 | 3/4 | 29/32 | 1 1/32 | 2 31/32 | 2.937 | 1.189 | 7/8 | UCFL213-40 | FL213 | UC213-40 | 5.1 | 62.2 | 44.1 | 14.5 | |
| | 3 1/4 | 295 | 175 | 58 | 240 | 31 | 25 | 33 | 78 | 75 | 30 | M27 | UCFL213-41 | | UC213-41 | 5.1 | | | | |
| 75 | 3 1/2 | 12 1/2 | 8 1/4 | 2 3/8 | 10 1/4 | 3/4 | 29/32 | 1 1/32 | 2 31/32 | 3.071 | 1.299 | 1 1/8 | UCFL214-44 | FL214 | UC214-44 | 5.7 | 104 | 68.2 | 13.2 | |
| | 3 3/4 | 315 | 185 | 61 | 250 | 35 | 28 | 36 | 81 | 78 | 33 | M30 | UCFL214-45 | | UC214-45 | 5.7 | | | | |
| 80 | 4 1/8 | 14 1/4 | 9 1/4 | 2 7/8 | 11 1/4 | 3/4 | 29/32 | 1 1/32 | 2 31/32 | 3.063 | 1.311 | 3/4 | UCFL215-47 | FL215 | UC215-47 | 6.4 | 67.4 | 48.3 | 14.5 | |
| | 4 1/4 | 320 | 195 | 66 | 260 | 35 | 30 | 39 | 89 | 82 | 32 | M30 | UCFL215-48 | | UC215-48 | 6.4 | | | | |
| 85 | 4 3/4 | 15 1/2 | 10 1/4 | 3 1/8 | 12 1/4 | 3/4 | 29/32 | 1 1/32 | 2 31/32 | 3.228 | 1.260 | 1 1/8 | UCFL216-50 | FL216 | UC216-50 | 7.8 | 72.7 | 53.0 | 14.6 | |
| | 5 1/8 | 355 | 210 | 68 | 285 | 38 | 32 | 38 | 90 | 86 | 34 | M33 | UCFL216-51 | | UC216-51 | 7.8 | | | | |
| 90 | 5 3/4 | 17 1/2 | 11 1/4 | 3 3/8 | 13 1/4 | 3/4 | 29/32 | 1 1/32 | 2 31/32 | 3.374 | 1.343 | 7/8 | UCFL217-52 | FL217 | UC217-52 | 9.8 | 84.0 | 61.9 | 14.5 | |
| | 6 1/8 | 370 | 220 | 74 | 300 | 38 | 32 | 44 | 100 | 96 | 40 | M33 | UCFL217-53 | | UC217-53 | 9.8 | | | | |
| 95 | 6 3/4 | 18 3/4 | 12 1/4 | 3 7/8 | 14 1/4 | 3/4 | 29/32 | 1 1/32 | 2 31/32 | 3.780 | 1.575 | 1 1/4 | UCFL218-56 | FL218 | UC218-56 | 12.3 | 96.1 | 71.5 | 14.5 | |
| | 7 1/8 | 420 | 240 | 84 | 320 | 44 | 38 | 48 | 112 | 104 | 44 | M36 | UCFL218-57 | | UC218-57 | 12.3 | | | | |

Tipo Brida Romboidal

UCFL

Agujero cilíndrico (con tornillo fijador)
 d (90) ~ 130 mm



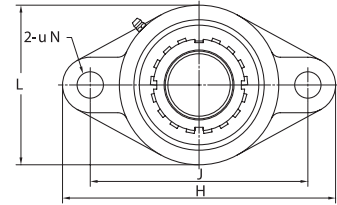
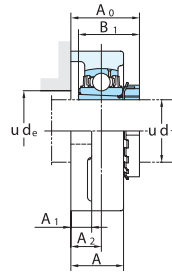
| Diámetro Eje mm pulg | Dimensiones | | | | | | | | | | | | | Perno | No. Unidad | Estándar No. Alojamiento | No. Inserto | Masa kg | Capacidad Carga Básica kN | | Factor |
|-------------------------|----------------------------------|----------------------------------|---------------------------------|----------------------------------|---------------------------------|---------------------------------|---------------------------------|---------------------------------|----------------|-------|-------------------------------|------------|-------|----------|------------|--------------------------|-------------|---------|---------------------------|-----------------|--------|
| | H | L | A | J | N | A | A ₁ | A ₂ | A ₀ | B | S | pulg. | mm | | | | | | C _r | C _{0r} | |
| 90 | 15 ⁵ / ₃₂ | 9 ¹ / ₄ | 3 | 12 ¹³ / ₃₂ | 1 ¹ / ₂ | 1 ¹³ / ₃₂ | 1 ⁴⁷ / ₆₄ | 3 ¹⁵ / ₁₆ | 3.780 | 1.575 | 1 ¹ / ₄ | UCFL318-56 | FL318 | UC318-56 | 19.0 | 143 | 107 | 13.3 | | | |
| | 385 | 235 | 76 | 315 | 38 | 36 | 44 | 100 | 96 | 40 | M33 | UCFL318 | | UC318 | 19.0 | | | | | | |
| 95 | 15 ¹⁵ / ₁₆ | 9 ²⁷ / ₃₂ | 3 ¹¹ / ₁₆ | 13 | 1 ³⁹ / ₆₄ | 1 ⁹ / ₁₆ | 2 ²¹ / ₆₄ | 4 ³ / ₄ | 4.055 | 1.614 | 1 ³ / ₈ | UCFL319 | FL319 | UC319 | 24.6 | 153 | 119 | 13.3 | | | |
| | 405 | 250 | 94 | 330 | 41 | 40 | 59 | 121 | 103 | 41 | M36 | UCFL319 | | UC319 | 24.6 | | | | | | |
| 100 | 17 ¹ / ₂ | 10 ⁵ / ₈ | 3 ¹¹ / ₁₆ | 14 ¹¹ / ₆₄ | 1 ⁴⁷ / ₆₄ | 1 ⁹ / ₁₆ | 2 ²¹ / ₆₄ | 4 ²⁹ / ₃₂ | 4.252 | 1.654 | 1 ¹ / ₂ | UCFL320 | FL320 | UC320 | 29.4 | 173 | 141 | 13.2 | | | |
| | 440 | 270 | 94 | 360 | 44 | 40 | 59 | 125 | 108 | 42 | M39 | UCFL320-63 | | UC320-63 | 29.4 | | | | | | |
| 110 | 18 ¹ / ₂ | 11 ¹³ / ₁₆ | 3 ²⁵ / ₃₂ | 15 ²³ / ₆₄ | 1 ⁴⁷ / ₆₄ | 1 ²¹ / ₃₂ | 2 ²³ / ₆₄ | 5 ⁵ / ₃₂ | 4.606 | 1.811 | 1 ¹ / ₂ | UCFL322 | FL322 | UC322 | 36.2 | 205 | 180 | 13.2 | | | |
| | 470 | 300 | 96 | 390 | 44 | 42 | 60 | 131 | 117 | 46 | M39 | UCFL322 | | UC322 | 36.2 | | | | | | |
| 120 | 20 ¹⁵ / ₃₂ | 13 | 4 ¹¹ / ₃₂ | 16 ³⁹ / ₆₄ | 1 ²⁷ / ₃₂ | 1 ⁷ / ₈ | 2 ⁹ / ₁₆ | 5 ¹ / ₂ | 4.961 | 2.008 | 1 ⁵ / ₈ | UCFL324 | FL324 | UC324 | 51.6 | 207 | 185 | 13.5 | | | |
| | 520 | 330 | 110 | 430 | 47 | 48 | 65 | 140 | 126 | 51 | M42 | UCFL324 | | UC324 | 51.6 | | | | | | |
| 130 | 21 ² / ₃₂ | 14 ³ / ₁₆ | 4 ¹⁷ / ₃₂ | 18 ⁷ / ₆₄ | 1 ²⁷ / ₃₂ | 1 ³ / ₃₂ | 2 ⁹ / ₁₆ | 5 ³ / ₄ | 5.315 | 2.126 | 1 ⁵ / ₈ | UCFL326 | FL326 | UC326 | 61.6 | 229 | 214 | 13.6 | | | |
| | 550 | 360 | 115 | 460 | 47 | 50 | 65 | 146 | 135 | 54 | M42 | UCFL326 | | UC326 | 61.6 | | | | | | |

Tipo Brida Romboidal

UKFL

Agujero cónico (con kit de montaje)

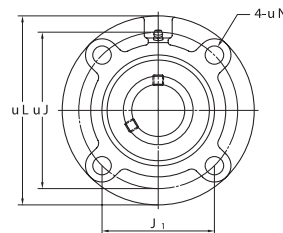
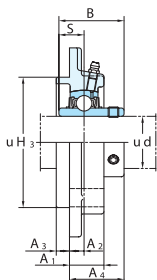
d_1 20 ~ (50) mm



| Diámetro Eje mm pulg | Dimensiones pulg. | | | | | | | | | | | | | Perno pulg. | | No. Unidad | Estándar No. Alojamiento | No. Inserto | Kit de Montaje | Masa kg | Capacidad Carga Básica kN | | Factor f_0 |
|-------------------------|-------------------|-----|-----|----|-----|----|----|----------------|------------------------------|------------------------------|------------------------------|------------------------------|-----|-------------|----------------|------------|------------------------------------|----------------------------------|----------------|---------|---------------------------|------|--------------|
| | H | L | A | J | N | A | 1 | A ₂ | A ₀ ¹⁾ | B ₁ ¹⁾ | B ₁ ¹⁾ | d _e ¹⁾ | mm | mm | C _r | | | | | | C _{0r} | | |
| 20 | 3/4 | 130 | 68 | 27 | 99 | 16 | 13 | 16 | 11/32 | 1 11/32 | 1 13/32 | 1 3/16 | 1/2 | M14 | UKFL205 | FL205 | UK205 | HE305X(HE2305X) H305X(H2305X) | 0.68 | 14.0 | 7.85 | 13.9 | |
| | 3/4 | 141 | 83 | 30 | 117 | 12 | 13 | 18 | 1 15/32 | 1 15/32 | 1 3/16 | 3/8 | M10 | UKFLX05 | FLX05 | UKX05 | HE2305X | 1.0 | 19.5 | 11.3 | 13.9 | | |
| | 3/4 | 150 | 80 | 29 | 113 | 19 | 13 | 16 | 1 9/32 | 1 9/32 | 1 3/8 | — | M16 | UKFL305 | FL305 | UK305 | HE2305X | 1.1 | 21.2 | 10.9 | 12.6 | | |
| | 1 | 148 | 80 | 31 | 117 | 16 | 13 | 18 | 1 15/32 | 1 15/32 | 1 1/2 | 1 13/32 | 3/8 | M14 | UKFL206 | FL206 | UK206 | H306X(HE2306X) HE306X(H2306X) | 0.97 | 19.5 | 11.3 | 13.9 | |
| 25 | 1 | 156 | 95 | 34 | 130 | 16 | 14 | 19 | 40 | 38 | 36 | 3/8 | M14 | UKFLX06 | FLX06 | UKX06 | HE2306X | 1.5 | 25.7 | 15.4 | 13.9 | | |
| | 1 | 180 | 90 | 32 | 134 | 23 | 15 | 18 | 41 | 38 | — | — | M20 | UKFL306 | FL306 | UK306 | HE2306X | 1.5 | 26.7 | 15.0 | 13.3 | | |
| | 1 1/8 | 161 | 90 | 34 | 130 | 16 | 14 | 19 | 41(43) | 35(43) | 41 | 3/8 | M14 | UKFL207 | FL207 | UK207 | HS307X(HS2307X) H307X(H2307X) | 1.3 | 25.7 | 15.4 | 13.9 | | |
| | 1 1/8 | 171 | 105 | 38 | 144 | 16 | 14 | 21 | 43.5 | 43 | 41 | 3/8 | M14 | UKFLX07 | FLX07 | UKX07 | HS2307X | 1.8 | 29.1 | 17.8 | 14.0 | | |
| 30 | 1 1/8 | 185 | 100 | 36 | 141 | 23 | 16 | 20 | 45.5 | 43 | — | — | M20 | UKFL307 | FL307 | UK307 | HS2307X | 1.9 | 33.4 | 19.3 | 13.2 | | |
| | 1 1/4 | 175 | 100 | 36 | 144 | 16 | 14 | 21 | 44.5(48) | 36(46) | 46 | 3/8 | M14 | UKFL208 | FL208 | UK208 | HE308X(HE2308X) HS308X(HS2308X) | 1.6 | 29.1 | 17.8 | 14.0 | | |
| | 1 3/8 | 179 | 111 | 40 | 148 | 16 | 14 | 22 | 46.5 | 46 | 46 | 3/8 | M14 | UKFLX08 | FLX08 | UKX08 | HE2308X | 2.1 | 34.1 | 21.3 | 14.0 | | |
| | 1 1/2 | 200 | 112 | 40 | 158 | 23 | 17 | 23 | 50.5 | 46 | — | — | M20 | UKFL308 | FL308 | UK308 | HE2308X | 2.5 | 40.7 | 24.0 | 13.2 | | |
| 35 | 1 1/2 | 188 | 108 | 38 | 148 | 19 | 15 | 22 | 47.5(51) | 39(50) | 52 | 5/8 | M16 | UKFL209 | FL209 | UK209 | HE309X(HE2309X) H309X(H2309X) | 2.0 | 34.1 | 21.3 | 14.0 | | |
| | 1 5/8 | 189 | 116 | 40 | 157 | 16 | 14 | 23 | 48.5 | 50 | 52 | 3/8 | M14 | UKFLX09 | FLX09 | UKX09 | HE2309X | 2.5 | 35.1 | 23.3 | 14.4 | | |
| | 1 1/2 | 230 | 125 | 44 | 177 | 25 | 18 | 25 | 55 | 50 | — | — | M22 | UKFL309 | FL309 | UK309 | HE2309X | 3.6 | 48.9 | 29.5 | 13.3 | | |
| | 1 5/8 | 197 | 115 | 40 | 157 | 19 | 15 | 22 | 48.5(52) | 42(55) | 58 | 5/8 | M16 | UKFL210 | FL210 | UK210 | HE309X(HE2309X) H310X(H2310X) | 2.3 | 35.1 | 23.3 | 14.4 | | |
| 45 | 1 3/4 | 216 | 133 | 44 | 184 | 19 | 20 | 26 | 53.5 | 55 | 58 | 5/8 | M16 | UKFLX10 | FLX10 | UKX10 | HE2310X | 3.7 | 43.4 | 29.4 | 14.4 | | |
| | 1 3/4 | 240 | 140 | 48 | 187 | 25 | 19 | 28 | 60 | 55 | — | — | M22 | UKFL310 | FL310 | UK310 | HE2310X | 4.4 | 62.0 | 38.3 | 13.2 | | |
| | 1 7/8 | 224 | 130 | 43 | 184 | 19 | 18 | 25 | 52.5(57) | 45(59) | 64 | 5/8 | M16 | UKFL211 | FL211 | UK211 | HS311X(HS2311X) H311X(H2311X) | 3.3 | 43.4 | 29.4 | 14.4 | | |
| | 2 | 224 | 130 | 43 | 184 | 19 | 18 | 25 | 52.5(57) | 45(59) | 64 | 5/8 | M16 | UKFL211 | FL211 | UK211 | HE311X(HE2311X) | 3.3 | 43.4 | 29.4 | 14.4 | | |

Tipo Brida Redonda

UCFC
 Agujero cilíndrico (con tornillo fijador)
 d 12 ~ 50 mm



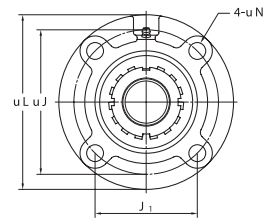
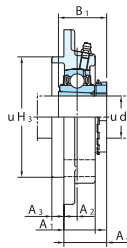
| Diámetro Eje mm pulg | Dimensiones | | | | | | | | | | | | | | | | Perno pulg. mm | No. Unidad | Estándar Alojamiento | No. Inserto | Masa kg | Capacidad Carga Básica kN | | Factor |
|-------------------------|-------------|----------------|---------|----------------|-----|----------------|----------------|----------------|----------------|-------|-------|------|------------|----------------|-----------------|----------------|----------------------|------------|----------------------|-------------|------------|------------------------------|--|--------|
| | L | H ₃ | J | J ₁ | N | A ₁ | A ₂ | A ₃ | A ₄ | B | S | UCFC | FC | C _r | C _{0r} | f ₀ | | | | | | | | |
| 2 | 7 9/32 | 4.9213 | 5 29/32 | 4 11/64 | 3/4 | 1 7/32 | 39/64 | 15/32 | 1 13/16 | 2.189 | 0.874 | 5/8 | UCFC211-32 | UC211-32 | 4.2 | | | | | | | | | |
| 2 1/8 | 185 | 125 | 150 | 106.1 | 19 | 31 | 13 | 12 | 46.4 | 55.6 | 22.2 | M16 | UCFC211-34 | UC211-34 | 4.2 | 43.4 | 29.4 | 14.4 | | | | | | |
| 2 3/8 | | | | | | | | | | | | | UCFC211 | UC211 | 4.2 | | | | | | | | | |
| 2 7/8 | | | | | | | | | | | | | UCFC211-35 | UC211-35 | 4.2 | | | | | | | | | |
| 55 | | | | | | | | | | | | | UCFCX11 | UCX11 | 4.3 | | | | | | | | | |
| 2 3/16 | 180 | 127 | 152 | 107.5 | 16 | 26 | 4 | 22 | 43.7 | 65.1 | 25.4 | M14 | UCFCX11-35 | UCX11-35 | 4.3 | 52.4 | 36.2 | 14.4 | | | | | | |
| 2 1/4 | | | | | | | | | | | | | UCFCX11-36 | UCX11-36 | 4.3 | | | | | | | | | |
| 2 1/4 | | | | | | | | | | | | | UCFC212-36 | UC212-36 | 5.0 | | | | | | | | | |
| 60 | 195 | 135 | 160 | 113.1 | 19 | 36 | 17 | 12 | 56.7 | 65.1 | 25.4 | M16 | UCFC212 | UC212 | 5.0 | 52.4 | 36.2 | 14.4 | | | | | | |
| 2 3/8 | | | | | | | | | | | | | UCFC212-38 | UC212-38 | 5.0 | | | | | | | | | |
| 2 7/8 | | | | | | | | | | | | | UCFC212-39 | UC212-39 | 5.0 | | | | | | | | | |
| 65 | 194 | 140 | 165 | 116.7 | 16 | 33 | 11 | 20 | 55.4 | 74.6 | 30.2 | M14 | UCFCX12 | UCX12 | 5.3 | 57.2 | 40.1 | 14.4 | | | | | | |
| 2 1/16 | 194 | 140 | 165 | 116.7 | 16 | 33 | 11 | 20 | 50.7 | 65.1 | 25.4 | M14 | UCFCX12-39 | UCX12-39 | 5.3 | | | | | | | | | |
| 2 1/2 | 205 | 145 | 170 | 120.2 | 19 | 36 | 16 | 14 | 55.7 | 65.1 | 25.4 | M16 | UCFC213-40 | UC213-40 | 5.6 | 57.2 | 40.1 | 14.4 | | | | | | |
| 2 1/2 | 194 | 140 | 165 | 116.7 | 16 | 33 | 11 | 20 | 55.4 | 74.6 | 30.2 | M14 | UCFC213 | UC213 | 5.6 | | | | | | | | | |
| 2 1/2 | | | | | | | | | | | | | UCFCX13-40 | UCX13-40 | 5.7 | 62.2 | 44.1 | 14.5 | | | | | | |
| 2 3/4 | 215 | 150 | 177 | 125.1 | 19 | 40 | 17 | 14 | 61.4 | 74.6 | 30.2 | M16 | UCFCX13 | UCX13 | 5.7 | | | | | | | | | |
| 2 3/4 | 222 | 164 | 190 | 134.3 | 19 | 36 | 14 | 20 | 58.5 | 77.8 | 33.3 | M16 | UCFC214-44 | UC214-44 | 6.8 | 62.2 | 44.1 | 14.5 | | | | | | |
| 2 15/16 | 220 | 160 | 184 | 130.1 | 19 | 40 | 18 | 16 | 62.5 | 77.8 | 33.3 | M16 | UCFC214 | UC214 | 6.8 | | | | | | | | | |
| 70 | 222 | 164 | 190 | 134.3 | 19 | 36 | 14 | 20 | 58.5 | 77.8 | 33.3 | M16 | UCFCX14-44 | UCX14-44 | 7.3 | 67.4 | 48.3 | 14.5 | | | | | | |
| 2 15/16 | 220 | 160 | 184 | 130.1 | 19 | 40 | 18 | 16 | 62.5 | 77.8 | 33.3 | M16 | UCFCX14 | UCX14 | 7.3 | | | | | | | | | |
| 75 | 220 | 160 | 184 | 130.1 | 19 | 40 | 18 | 16 | 62.5 | 77.8 | 33.3 | M16 | UCFC215-47 | UC215-47 | 7.2 | 67.4 | 48.3 | 14.5 | | | | | | |
| 2 15/16 | 222 | 164 | 190 | 134.3 | 19 | 36 | 14 | 20 | 58.5 | 77.8 | 33.3 | M16 | UCFC215 | UC215 | 7.2 | | | | | | | | | |
| 80 | 220 | 160 | 184 | 130.1 | 19 | 40 | 18 | 16 | 62.5 | 77.8 | 33.3 | M16 | UCFCX15-47 | UCX15-47 | 8.0 | 72.7 | 53.0 | 14.6 | | | | | | |
| 2 15/16 | 222 | 164 | 190 | 134.3 | 19 | 36 | 14 | 20 | 58.5 | 77.8 | 33.3 | M16 | UCFCX15 | UCX15 | 8.0 | | | | | | | | | |
| 3 | 240 | 170 | 200 | 141.4 | 23 | 42 | 18 | 16 | 67.3 | 82.6 | 33.3 | M20 | UCFC216-50 | UC216-50 | 8.7 | 72.7 | 53.0 | 14.6 | | | | | | |
| 3 1/8 | 260 | 186 | 219 | 154.8 | 23 | 36 | 10 | 25 | 61.6 | 85.7 | 34.1 | M20 | UCFC216 | UC216 | 8.7 | | | | | | | | | |
| 80 | 260 | 186 | 219 | 154.8 | 23 | 36 | 10 | 25 | 61.6 | 85.7 | 34.1 | M20 | UCFCX16 | UCX16 | 11.3 | 84.0 | 61.9 | 14.5 | | | | | | |
| 3 1/4 | 250 | 180 | 208 | 147.1 | 23 | 45 | 18 | 18 | 69.6 | 85.7 | 34.1 | M20 | UCFC217-52 | UC217-52 | 10.3 | 84.0 | 61.9 | 14.5 | | | | | | |
| 2 15/16 | 260 | 186 | 219 | 154.8 | 23 | 36 | 10 | 25 | 66.3 | 96 | 39.7 | M20 | UCFC217 | UC217 | 10.3 | | | | | | | | | |
| 85 | 265 | 190 | 220 | 155.5 | 23 | 50 | 22 | 18 | 78.3 | 96 | 39.7 | M20 | UCFCX17 | UCX17 | 12.9 | 96.1 | 71.5 | 14.5 | | | | | | |
| 3 7/8 | 265 | 190 | 220 | 155.5 | 23 | 50 | 22 | 18 | 78.3 | 96 | 39.7 | M20 | UCFCX17-55 | UCX17-55 | 12.9 | | | | | | | | | |
| 3 1/2 | 265 | 190 | 220 | 155.5 | 23 | 50 | 22 | 18 | 78.3 | 96 | 39.7 | M20 | UCFC218-56 | UC218-56 | 13.3 | 96.1 | 71.5 | 14.5 | | | | | | |
| 3 1/2 | 260 | 186 | 219 | 154.8 | 23 | 43 | 12 | 28 | 73.1 | 104 | 42.9 | M20 | UCFC218 | UC218 | 13.3 | | | | | | | | | |
| 90 | 260 | 186 | 219 | 154.8 | 23 | 43 | 12 | 28 | 73.1 | 104 | 42.9 | M20 | UCFCX18 | UCX18 | 13.5 | 109 | 81.9 | 14.4 | | | | | | |
| 3 15/16 | 276 | 206 | 238 | 168.3 | 23 | 66 | 22 | 28 | 90.3 | 117.5 | 49.2 | M20 | UCFCX20 | UCX20 | 18.2 | 133 | 105 | 14.4 | | | | | | |
| 4 | 276 | 206 | 238 | 168.3 | 23 | 66 | 22 | 28 | 90.3 | 117.5 | 49.2 | M20 | UCFCX20-63 | UCX20-63 | 18.2 | | | | | | | | | |
| | | | | | | | | | | | | | UCFCX20-64 | UCX20-64 | 18.2 | | | | | | | | | |

Tipo Brida Cuadrada

UKFC

Agujero cónico (con kit de montaje)

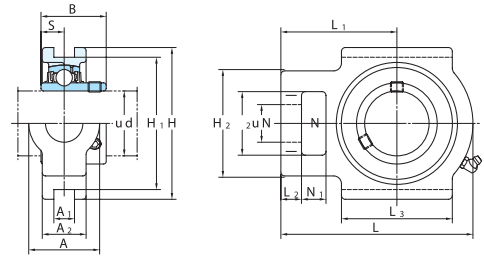
d_1 (65) ~ 90 mm



| Diámetro Eje mm pulg | Dimensiones | | | | | | | | | | | | | Perno | No. Unidad | Estándar No. Alojamiento | No. Inserto | Kit de Montaje | Masa kg | Capacidad Carga Básica | | Factor |
|-------------------------|-------------|---------|--------|---------|--------|-------|---------|-------|-------------------|-------------------|---------------|-----|----------------|-------|------------|--------------------------|-------------|----------------|---------|------------------------|----|--------|
| | L | H 3 | J | J 1 | N | A 1 | A 2 | A 3 | A 4 ¹⁾ | B 1 ¹⁾ | pulg. | mm | C _r | | | | | | | C _{0r} | kN | |
| 65 | 2 1/2 | 8 3/4 | 6.4567 | 7 31/64 | 5 9/32 | 3/4 | 1 3/8 | 15/32 | 55/64 | 1 7/8 | 2 7/8 | 5/8 | UKFCX15 | FCX15 | UKX15 | HE2315X | 7.7 | 72.7 | 53.0 | 14.6 | | |
| | 2 3/4 | 222 | 164 | 190 | 134.3 | 19 | 35 | 12 | 22 | 48 | 73 | M16 | UKFC216 | FC216 | UK216 | HE316X(HE2316X) | 7.7 | 72.7 | 53.0 | 14.6 | | |
| | 2 3/4 | 240 | 170 | 200 | 141.4 | 23 | 42 | 18 | 16 | 56(62.5) | 59(78) | M20 | UKFCX16 | FCX16 | UKX16 | H316X(H2316X) | 9.0 | 72.7 | 53.0 | 14.6 | | |
| 70 | 2 3/4 | 10 1/4 | 7.3228 | 8 5/8 | 6 3/32 | 29/32 | 1 13/32 | 25/64 | 63/64 | 1 15/16 | 3 1/16 | M20 | UKFCX16 | FCX16 | UKX16 | H2316X | 11.4 | 84.0 | 61.9 | 14.5 | | |
| | 3 | 260 | 186 | 219 | 154.8 | 23 | 36 | 10 | 25 | 49 | 78 | M20 | UKFC217 | FC217 | UK217 | H317X(H2317X) | 10.4 | 84.0 | 61.9 | 14.5 | | |
| | 3 | 250 | 180 | 208 | 147.1 | 23 | 45 | 18 | 18 | 58(64.5) | 63(82) | M20 | UKFCX17 | FCX17 | UKX17 | HE2317X | 12.6 | 96.1 | 71.5 | 14.5 | | |
| 80 | 3 | 260 | 186 | 219 | 154.8 | 23 | 36 | 10 | 25 | 52 | 82 | M20 | UKFCX17 | FCX17 | UKX17 | HE2317X | 12.6 | 96.1 | 71.5 | 14.5 | | |
| | 3 | 10 7/16 | 7.4803 | 8 27/32 | 6 7/8 | 29/32 | 1 31/32 | 55/64 | 45/64 | 2 7/32(2 13/16) | 2 9/16(3 3/8) | M20 | UKFC218 | FC218 | UK218 | H318X(H2318X) | 13.3 | 96.1 | 71.5 | 14.5 | | |
| | 3 | 265 | 190 | 220 | 155.5 | 23 | 50 | 22 | 18 | 64(71.5) | 65(86) | M20 | UKFCX18 | FCX18 | UKX18 | H2318X | 13.0 | 109 | 81.9 | 14.4 | | |
| 90 | 3 1/2 | 10 7/8 | 8.1102 | 9 3/8 | 6 5/8 | 29/32 | 2 19/32 | 55/64 | 1 7/64 | 2 23/32 | 3 13/16 | M20 | UKFCX20 | FCX20 | UKX20 | HE2320X | 17.1 | 133 | 105 | 14.4 | | |
| | 3 1/2 | 276 | 206 | 238 | 168.3 | 23 | 66 | 22 | 28 | 69 | 97 | M20 | UKFCX20 | FCX20 | UKX20 | H2320X | 17.1 | 133 | 105 | 14.4 | | |

Tipo Tensor

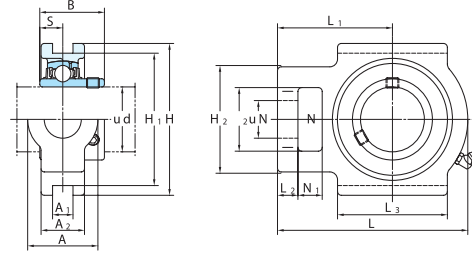
UCT Agujero cilíndrico (con tornillo fijador) $d_{12} \sim (45) \text{ mm}$



| Diámetro Eje mm pulg d | Dimensiones pulg. mm | | | | | | | | | | | | | | | | Estándar | | | Capacidad | | Factor | |
|------------------------------|----------------------------|-------|-------|-------|---------|-------|---------|---------|---------|-------|-------|-------|-------|-------|-------|------------|------------------|-------------|------------|--------------------|----------------|--------|-----------------|
| | A | A1 | A2 | H | H1 | H2 | L | L1 | L2 | L3 | N | N1 | N2 | B | S | No. Unidad | No. Ajustamiento | No. Inserto | Masa kg | Carga Básica kN | C _r | | C _{0r} |
| 12 | | | | | | | | | | | | | | | | UCT201 | | UC201 | 0.81 | | | | |
| 15 | 1/2 | 1 1/4 | 1 1/2 | 3 1/2 | 2 63/64 | 2 | 3 11/16 | 2 13/32 | 2 13/32 | 2 | 3/4 | 5/8 | 1 1/4 | 1.220 | 0.500 | UCT201-8 | | UC201-8 | 0.81 | | | | |
| | 5/8 | 32 | 12 | 21 | 89 | 76 | 51 | 94 | 61 | 10 | 51 | 19 | 16 | 32 | 31 | UCT202 | T204 | UC202 | 0.79 | 12.8 | 6.65 | 13.2 | |
| 17 | 3/4 | | | | | | | | | | | | | | | UCT202-10 | | UC202-10 | 0.79 | | | | |
| | | | | | | | | | | | | | | | | UCT203 | | UC203 | 0.78 | | | | |
| 20 | | | | | | | | | | | | | | | | UCT204-12 | | UC204-12 | 0.78 | | | | |
| | 7/8 | | | | | | | | | | | | | | | UCT204 | | UC204 | 0.76 | | | | |
| 25 | 1 1/8 | 1 1/4 | 1 1/2 | 3 1/2 | 2 63/64 | 2 | 3 15/16 | 2 7/16 | 2 13/32 | 2 | 3/4 | 5/8 | 1 1/4 | 1.343 | 0.563 | UCT205-14 | | UC205-14 | 0.84 | | | | |
| | 1 1/2 | 32 | 12 | 24 | 89 | 76 | 51 | 97 | 62 | 10 | 51 | 19 | 16 | 32 | 34.1 | UCT205-15 | T205 | UC205-15 | 0.84 | 14.0 | 7.85 | 13.9 | |
| 30 | 1 3/8 | 1 1/2 | 1 3/4 | 3 3/4 | 2 7/8 | 2 1/2 | 3 1/2 | 2 7/8 | 2 1/2 | 2 1/2 | 2 1/2 | 2 1/2 | 2 1/2 | 2 1/2 | 2 1/2 | UCT205-16 | | UC205-16 | 0.84 | | | | |
| | 1 1/2 | 37 | 12 | 28 | 102 | 89 | 56 | 113 | 70 | 10 | 57 | 22 | 16 | 37 | 38.1 | UCTX05 | TX05 | UCX05 | 1.4 | 19.5 | 11.3 | 13.9 | |
| 35 | 1 7/8 | 1 3/4 | 1 1/2 | 3 3/4 | 2 7/8 | 2 1/2 | 3 1/2 | 2 7/8 | 2 1/2 | 2 1/2 | 2 1/2 | 2 1/2 | 2 1/2 | 2 1/2 | 2 1/2 | UCT305 | | UC305 | 1.4 | 21.2 | 10.9 | 12.6 | |
| | 1 1/2 | 37 | 12 | 28 | 102 | 89 | 56 | 113 | 70 | 10 | 57 | 22 | 16 | 37 | 38.1 | UCT305-16 | | UC305-16 | 1.4 | | | | |
| 40 | 1 3/4 | 1 1/2 | 1 3/4 | 3 3/4 | 2 7/8 | 2 1/2 | 3 1/2 | 2 7/8 | 2 1/2 | 2 1/2 | 2 1/2 | 2 1/2 | 2 1/2 | 2 1/2 | 2 1/2 | UCT206 | | UC206 | 1.3 | 19.5 | 11.3 | 13.9 | |
| | 1 3/8 | 37 | 12 | 28 | 102 | 89 | 56 | 113 | 70 | 10 | 57 | 22 | 16 | 37 | 38.1 | UCT206-18 | | UC206-18 | 1.3 | | | | |
| 45 | 1 7/8 | 1 3/4 | 1 1/2 | 3 3/4 | 2 7/8 | 2 1/2 | 3 1/2 | 2 7/8 | 2 1/2 | 2 1/2 | 2 1/2 | 2 1/2 | 2 1/2 | 2 1/2 | 2 1/2 | UCT206-19 | | UC206-19 | 1.3 | 19.5 | 11.3 | 13.9 | |
| | 1 3/4 | 37 | 12 | 28 | 102 | 89 | 56 | 113 | 70 | 10 | 57 | 22 | 16 | 37 | 38.1 | UCT206-20 | | UC206-20 | 1.3 | | | | |
| 50 | 1 7/8 | 1 3/4 | 1 1/2 | 3 3/4 | 2 7/8 | 2 1/2 | 3 1/2 | 2 7/8 | 2 1/2 | 2 1/2 | 2 1/2 | 2 1/2 | 2 1/2 | 2 1/2 | 2 1/2 | UCTX06 | | UCX06 | 1.7 | 25.7 | 15.4 | 13.9 | |
| | 1 3/4 | 41 | 16 | 28 | 100 | 90 | 70 | 137 | 85 | 14 | 74 | 28 | 18 | 41 | 43 | UCTX06-19 | | UCX06-19 | 1.7 | 26.7 | 15.0 | 13.3 | |
| 55 | 1 7/8 | 1 3/4 | 1 1/2 | 3 3/4 | 2 7/8 | 2 1/2 | 3 1/2 | 2 7/8 | 2 1/2 | 2 1/2 | 2 1/2 | 2 1/2 | 2 1/2 | 2 1/2 | 2 1/2 | UCT306 | | UC306 | 1.8 | 26.7 | 15.0 | 13.3 | |
| | 1 3/4 | 41 | 16 | 28 | 100 | 90 | 70 | 137 | 85 | 14 | 74 | 28 | 18 | 41 | 43 | UCT306-20 | | UC306-20 | 1.7 | | | | |
| 60 | 1 7/8 | 1 3/4 | 1 1/2 | 3 3/4 | 2 7/8 | 2 1/2 | 3 1/2 | 2 7/8 | 2 1/2 | 2 1/2 | 2 1/2 | 2 1/2 | 2 1/2 | 2 1/2 | 2 1/2 | UCT207-20 | | UC207-20 | 1.6 | 25.7 | 15.4 | 13.9 | |
| | 1 3/4 | 37 | 12 | 28 | 102 | 89 | 56 | 113 | 70 | 10 | 57 | 22 | 16 | 37 | 38.1 | UCT207-21 | | UC207-21 | 1.6 | | | | |
| 65 | 1 7/8 | 1 3/4 | 1 1/2 | 3 3/4 | 2 7/8 | 2 1/2 | 3 1/2 | 2 7/8 | 2 1/2 | 2 1/2 | 2 1/2 | 2 1/2 | 2 1/2 | 2 1/2 | 2 1/2 | UCT207-22 | | UC207-22 | 1.6 | 25.7 | 15.4 | 13.9 | |
| | 1 3/4 | 37 | 12 | 28 | 102 | 89 | 56 | 113 | 70 | 10 | 57 | 22 | 16 | 37 | 38.1 | UCT207 | | UC207 | 1.6 | | | | |
| 70 | 1 7/8 | 1 3/4 | 1 1/2 | 3 3/4 | 2 7/8 | 2 1/2 | 3 1/2 | 2 7/8 | 2 1/2 | 2 1/2 | 2 1/2 | 2 1/2 | 2 1/2 | 2 1/2 | 2 1/2 | UCT207-23 | | UC207-23 | 1.6 | 29.1 | 17.8 | 14.0 | |
| | 1 3/4 | 49 | 16 | 36 | 114 | 102 | 83 | 144 | 88 | 15 | 83 | 29 | 19 | 49 | 49.2 | UCTX07-22 | | UCX07-22 | 2.7 | 29.1 | 17.8 | 14.0 | |
| 75 | 1 7/8 | 1 3/4 | 1 1/2 | 3 3/4 | 2 7/8 | 2 1/2 | 3 1/2 | 2 7/8 | 2 1/2 | 2 1/2 | 2 1/2 | 2 1/2 | 2 1/2 | 2 1/2 | 2 1/2 | UCTX07 | | UCX07 | 2.7 | 29.1 | 17.8 | 14.0 | |
| | 1 3/4 | 49 | 16 | 36 | 114 | 102 | 83 | 144 | 88 | 15 | 83 | 29 | 19 | 49 | 49.2 | UCTX07-23 | | UCX07-23 | 2.7 | | | | |
| 80 | 1 7/8 | 1 3/4 | 1 1/2 | 3 3/4 | 2 7/8 | 2 1/2 | 3 1/2 | 2 7/8 | 2 1/2 | 2 1/2 | 2 1/2 | 2 1/2 | 2 1/2 | 2 1/2 | 2 1/2 | UCT307 | | UC307 | 2.3 | 33.4 | 19.3 | 13.2 | |
| | 1 3/4 | 45 | 16 | 32 | 111 | 100 | 75 | 150 | 94 | 15 | 80 | 30 | 20 | 45 | 48 | UCT307-24 | | UC307-24 | 2.3 | | | | |
| 85 | 1 7/8 | 1 3/4 | 1 1/2 | 3 3/4 | 2 7/8 | 2 1/2 | 3 1/2 | 2 7/8 | 2 1/2 | 2 1/2 | 2 1/2 | 2 1/2 | 2 1/2 | 2 1/2 | 2 1/2 | UCT208-24 | | UC208-24 | 2.5 | 29.1 | 17.8 | 14.0 | |
| | 1 3/4 | 49 | 16 | 36 | 117 | 102 | 83 | 144 | 87 | 15 | 83 | 29 | 19 | 49 | 49.2 | UCT208-25 | | UC208-25 | 2.5 | | | | |
| 90 | 1 7/8 | 1 3/4 | 1 1/2 | 3 3/4 | 2 7/8 | 2 1/2 | 3 1/2 | 2 7/8 | 2 1/2 | 2 1/2 | 2 1/2 | 2 1/2 | 2 1/2 | 2 1/2 | 2 1/2 | UCT208 | | UC208 | 2.5 | 29.1 | 17.8 | 14.0 | |
| | 1 3/4 | 49 | 16 | 36 | 117 | 102 | 83 | 144 | 87 | 15 | 83 | 29 | 19 | 49 | 49.2 | UCTX08-24 | | UCX08-24 | 2.6 | 34.1 | 21.3 | 14.0 | |
| 95 | 1 7/8 | 1 3/4 | 1 1/2 | 3 3/4 | 2 7/8 | 2 1/2 | 3 1/2 | 2 7/8 | 2 1/2 | 2 1/2 | 2 1/2 | 2 1/2 | 2 1/2 | 2 1/2 | 2 1/2 | UCTX08 | | UCX08 | 2.6 | 40.7 | 24.0 | 13.2 | |
| | 1 3/4 | 50 | 18 | 34 | 124 | 112 | 83 | 162 | 100 | 17 | 89 | 32 | 22 | 50 | 52 | UCT308-24 | | UC308-24 | 3.0 | | | | |
| 100 | 1 7/8 | 1 3/4 | 1 1/2 | 3 3/4 | 2 7/8 | 2 1/2 | 3 1/2 | 2 7/8 | 2 1/2 | 2 1/2 | 2 1/2 | 2 1/2 | 2 1/2 | 2 1/2 | 2 1/2 | UCT308 | | UC308 | 3.0 | 40.7 | 24.0 | 13.2 | |
| | 1 3/4 | 49 | 16 | 35 | 117 | 102 | 83 | 144 | 87 | 16 | 83 | 29 | 19 | 49 | 49.2 | UCT209-26 | | UC209-26 | 2.4 | 34.1 | 21.3 | 14.0 | |
| 105 | 1 7/8 | 1 3/4 | 1 1/2 | 3 3/4 | 2 7/8 | 2 1/2 | 3 1/2 | 2 7/8 | 2 1/2 | 2 1/2 | 2 1/2 | 2 1/2 | 2 1/2 | 2 1/2 | 2 1/2 | UCT209-27 | | UC209-27 | 2.4 | 34.1 | 21.3 | 14.0 | |
| | 1 3/4 | 49 | 16 | 35 | 117 | 102 | 83 | 144 | 87 | 16 | 83 | 29 | 19 | 49 | 49.2 | UCT209-28 | | UC209-28 | 2.4 | | | | |
| 110 | 1 7/8 | 1 3/4 | 1 1/2 | 3 3/4 | 2 7/8 | 2 1/2 | 3 1/2 | 2 7/8 | 2 1/2 | 2 1/2 | 2 1/2 | 2 1/2 | 2 1/2 | 2 1/2 | 2 1/2 | UCT209 | | UC209 | 2.4 | 35.1 | 23.3 | 14.4 | |
| | 1 3/4 | 49 | 16 | 38 | 117 | 102 | 83 | 149 | 90 | 16 | 86 | 29 | 19 | 49 | 51.6 | UCTX09-28 | | UCX09-28 | 2.9 | | | | |

Tipo Tensor

UCT
 Agujero cilíndrico (con tornillo fijador)
 d (45) ~ (75) mm



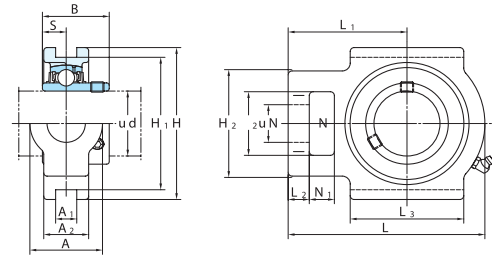
| Diámetro Eje mm d | Dimensiones pulg. mm | | | | | | | | | | | | | | | | | | | Factor | | | |
|-------------------------|----------------------------|---------|--------|---------|---------|---------|---------|---------|---------|-------|---------|---------|---------|---------|-------|------------|-----------------|-------------|----------|--------|---------------------------|----------------|-----------------|
| | A | A1 | A2 | H | H1 | H2 | L | L1 | L2 | L3 | N | N1 | N2 | B | S | No. Unidad | No. Alojamiento | No. Inserto | Masa kg | | Capacidad Carga Básica kN | C _r | C _{0r} |
| 45 | 1 3/4 | 2 5/32 | 49/64 | 1 1/2 | 5 1/16 | 4 59/64 | 3 17/32 | 7 | 4 11/32 | 23/32 | 3 13/16 | 1 11/32 | 15/16 | 2 5/32 | 2.244 | 0.866 | UCT309-28 | T309 | UC309-28 | 4.1 | 48.9 | 29.5 | 13.3 |
| | 1 7/8 | 1 15/16 | 5/8 | 1 15/32 | 4 19/32 | 4 1/64 | 3 9/32 | 5 7/8 | 3 17/32 | 5/8 | 3 3/8 | 1 5/32 | 3/4 | 1 15/16 | 2.031 | 0.748 | UCT309 | | UC309 | 4.1 | | | |
| 50 | 2 | 1 15/16 | 5/8 | 1 15/32 | 4 19/32 | 4 1/64 | 3 9/32 | 5 7/8 | 3 17/32 | 5/8 | 3 3/8 | 1 5/32 | 3/4 | 1 15/16 | 2.031 | 0.748 | UCT210-30 | T210 | UC210-30 | 2.6 | 35.1 | 23.3 | 14.4 |
| | 2 | 1 15/16 | 5/8 | 1 15/32 | 4 19/32 | 4 1/64 | 3 9/32 | 5 7/8 | 3 17/32 | 5/8 | 3 3/8 | 1 5/32 | 3/4 | 1 15/16 | 2.031 | 0.748 | UCT210-31 | | UC210-31 | 2.6 | | | |
| | 2 | 1 15/16 | 5/8 | 1 15/32 | 4 19/32 | 4 1/64 | 3 9/32 | 5 7/8 | 3 17/32 | 5/8 | 3 3/8 | 1 5/32 | 3/4 | 1 15/16 | 2.031 | 0.748 | UCT210-32 | | UC210-32 | 2.6 | | | |
| | 2 | 1 15/16 | 5/8 | 1 15/32 | 4 19/32 | 4 1/64 | 3 9/32 | 5 7/8 | 3 17/32 | 5/8 | 3 3/8 | 1 5/32 | 3/4 | 1 15/16 | 2.031 | 0.748 | UCTX10-31 | TX10 | UCX10-31 | 4.4 | 43.4 | 29.4 | 14.4 |
| 55 | 2 | 1 15/16 | 5/8 | 1 15/32 | 4 19/32 | 4 1/64 | 3 9/32 | 5 7/8 | 3 17/32 | 5/8 | 3 3/8 | 1 5/32 | 3/4 | 1 15/16 | 2.031 | 0.748 | UCTX10-32 | | UCX10-32 | 4.4 | | | |
| | 2 | 1 15/16 | 5/8 | 1 15/32 | 4 19/32 | 4 1/64 | 3 9/32 | 5 7/8 | 3 17/32 | 5/8 | 3 3/8 | 1 5/32 | 3/4 | 1 15/16 | 2.031 | 0.748 | UCT310 | T310 | UC310 | 4.9 | 62.0 | 38.3 | 13.2 |
| | 2 | 1 15/16 | 5/8 | 1 15/32 | 4 19/32 | 4 1/64 | 3 9/32 | 5 7/8 | 3 17/32 | 5/8 | 3 3/8 | 1 5/32 | 3/4 | 1 15/16 | 2.031 | 0.748 | UCT211-32 | | UC211-32 | 4.0 | | | |
| | 2 | 1 15/16 | 5/8 | 1 15/32 | 4 19/32 | 4 1/64 | 3 9/32 | 5 7/8 | 3 17/32 | 5/8 | 3 3/8 | 1 5/32 | 3/4 | 1 15/16 | 2.031 | 0.748 | UCT211-34 | T211 | UC211-34 | 4.0 | 43.4 | 29.4 | 14.4 |
| 60 | 2 3/16 | 2 1/32 | 55/64 | 1 1/2 | 5 3/4 | 4 1/32 | 6 23/32 | 4 3/16 | 3/4 | 3 3/4 | 1 3/8 | 31/32 | 2 17/32 | 2.189 | 0.874 | UCTX11 | | UCX11 | 5.3 | 52.4 | 36.2 | 14.4 | |
| | 2 3/16 | 2 1/32 | 55/64 | 1 1/2 | 5 3/4 | 4 1/32 | 6 23/32 | 4 3/16 | 3/4 | 3 3/4 | 1 3/8 | 31/32 | 2 17/32 | 2.189 | 0.874 | UCTX11-35 | TX11 | UCX11-35 | 5.3 | | | | |
| | 2 1/4 | 2 1/32 | 55/64 | 1 1/2 | 5 3/4 | 4 1/32 | 6 23/32 | 4 3/16 | 3/4 | 3 3/4 | 1 3/8 | 31/32 | 2 17/32 | 2.189 | 0.874 | UCTX11-36 | | UCX11-36 | 5.3 | | | | |
| | 2 1/4 | 2 1/32 | 55/64 | 1 1/2 | 5 3/4 | 4 1/32 | 6 23/32 | 4 3/16 | 3/4 | 3 3/4 | 1 3/8 | 31/32 | 2 17/32 | 2.189 | 0.874 | UCT311-32 | T311 | UC311-32 | 6.1 | 71.6 | 45.0 | 13.2 | |
| 65 | 2 1/4 | 2 1/32 | 55/64 | 1 1/2 | 5 3/4 | 4 1/32 | 6 23/32 | 4 3/16 | 3/4 | 3 3/4 | 1 3/8 | 31/32 | 2 17/32 | 2.189 | 0.874 | UCT212-36 | | UC212-36 | 4.9 | | | | |
| | 2 3/8 | 2 1/32 | 55/64 | 1 1/2 | 5 3/4 | 4 1/32 | 6 23/32 | 4 3/16 | 3/4 | 3 3/4 | 1 3/8 | 31/32 | 2 17/32 | 2.189 | 0.874 | UCT212 | T212 | UC212 | 4.9 | 52.4 | 36.2 | 14.4 | |
| | 2 7/16 | 2 1/32 | 55/64 | 1 1/2 | 5 3/4 | 4 1/32 | 6 23/32 | 4 3/16 | 3/4 | 3 3/4 | 1 3/8 | 31/32 | 2 17/32 | 2.189 | 0.874 | UCT212-38 | | UC212-38 | 4.9 | | | | |
| | 2 7/16 | 2 1/32 | 55/64 | 1 1/2 | 5 3/4 | 4 1/32 | 6 23/32 | 4 3/16 | 3/4 | 3 3/4 | 1 3/8 | 31/32 | 2 17/32 | 2.189 | 0.874 | UCT212-39 | | UC212-39 | 4.9 | | | | |
| 70 | 2 3/4 | 1 1/32 | 1 7/8 | 6 9/16 | 5 15/16 | 4 3/8 | 8 13/32 | 5 13/32 | 19/16 | 4 3/4 | 1 5/8 | 1 1/4 | 2 3/4 | 2.563 | 1.000 | UCTX12 | TX12 | UCX12 | 7.4 | 57.2 | 40.1 | 14.4 | |
| | 2 3/4 | 1 1/32 | 1 7/8 | 6 9/16 | 5 15/16 | 4 3/8 | 8 13/32 | 5 13/32 | 19/16 | 4 3/4 | 1 5/8 | 1 1/4 | 2 3/4 | 2.563 | 1.000 | UCTX12-39 | | UCX12-39 | 7.4 | | | | |
| | 2 3/4 | 1 1/32 | 1 7/8 | 6 9/16 | 5 15/16 | 4 3/8 | 8 13/32 | 5 13/32 | 19/16 | 4 3/4 | 1 5/8 | 1 1/4 | 2 3/4 | 2.563 | 1.000 | UCT312 | T312 | UC312 | 7.6 | 81.9 | 52.2 | 13.2 | |
| | 2 3/4 | 1 1/32 | 1 7/8 | 6 9/16 | 5 15/16 | 4 3/8 | 8 13/32 | 5 13/32 | 19/16 | 4 3/4 | 1 5/8 | 1 1/4 | 2 3/4 | 2.563 | 1.000 | UCT213-40 | T213 | UC213-40 | 6.9 | 57.2 | 40.1 | 14.4 | |
| 65 | 2 1/2 | 2 5/32 | 55/64 | 1 13/16 | 7 | 6 19/64 | 4 7/16 | 8 21/32 | 5 9/16 | 29/32 | 4 27/32 | 1 5/8 | 1 7/32 | 2 25/32 | 2.795 | 1.024 | UCTX13-40 | TX13 | UCX13-40 | 7.6 | 62.2 | 44.1 | 14.5 |
| | 2 1/2 | 2 5/32 | 55/64 | 1 13/16 | 7 | 6 19/64 | 4 7/16 | 8 21/32 | 5 9/16 | 29/32 | 4 27/32 | 1 5/8 | 1 7/32 | 2 25/32 | 2.795 | 1.024 | UCTX13 | | UCX13 | 7.6 | | | |
| | 2 1/2 | 2 5/32 | 55/64 | 1 13/16 | 7 | 6 19/64 | 4 7/16 | 8 21/32 | 5 9/16 | 29/32 | 4 27/32 | 1 5/8 | 1 7/32 | 2 25/32 | 2.795 | 1.024 | UCT313-40 | T313 | UC313-40 | 9.3 | 92.7 | 59.9 | 13.2 |
| | 2 1/2 | 2 5/32 | 55/64 | 1 13/16 | 7 | 6 19/64 | 4 7/16 | 8 21/32 | 5 9/16 | 29/32 | 4 27/32 | 1 5/8 | 1 7/32 | 2 25/32 | 2.795 | 1.024 | UCT214-44 | T214 | UC214-44 | 7.0 | 62.2 | 44.1 | 14.5 |
| 70 | 2 3/4 | 1 1/32 | 1 7/8 | 6 9/16 | 5 15/16 | 4 3/8 | 8 13/32 | 5 13/32 | 19/16 | 4 3/4 | 1 5/8 | 1 1/4 | 2 3/4 | 2.937 | 1.189 | UCTX14-44 | TX14 | UCX14-44 | 7.9 | 67.4 | 48.3 | 14.5 | |
| | 2 3/4 | 1 1/32 | 1 7/8 | 6 9/16 | 5 15/16 | 4 3/8 | 8 13/32 | 5 13/32 | 19/16 | 4 3/4 | 1 5/8 | 1 1/4 | 2 3/4 | 2.937 | 1.189 | UCTX14 | | UCX14 | 7.9 | | | | |
| | 2 3/4 | 1 1/32 | 1 7/8 | 6 9/16 | 5 15/16 | 4 3/8 | 8 13/32 | 5 13/32 | 19/16 | 4 3/4 | 1 5/8 | 1 1/4 | 2 3/4 | 2.937 | 1.189 | UCT314-44 | T314 | UC314-44 | 11.1 | 104 | 68.2 | 13.2 | |
| | 2 3/4 | 1 1/32 | 1 7/8 | 6 9/16 | 5 15/16 | 4 3/8 | 8 13/32 | 5 13/32 | 19/16 | 4 3/4 | 1 5/8 | 1 1/4 | 2 3/4 | 2.937 | 1.189 | UCT215-47 | T215 | UC215-47 | 7.3 | 67.4 | 48.3 | 14.5 | |
| 75 | 3 | 2 3/4 | 1 1/32 | 1 7/8 | 6 9/16 | 5 15/16 | 4 3/8 | 8 13/32 | 5 13/32 | 19/16 | 4 3/4 | 1 5/8 | 1 1/4 | 2 3/4 | 3.063 | 1.331 | UCT215-48 | | UC215-48 | 7.3 | | | |
| | 3 | 2 3/4 | 1 1/32 | 1 7/8 | 6 9/16 | 5 15/16 | 4 3/8 | 8 13/32 | 5 13/32 | 19/16 | 4 3/4 | 1 5/8 | 1 1/4 | 2 3/4 | 3.063 | 1.331 | UCTX15-47 | TX15 | UCX15-47 | 8.7 | 72.7 | 53.0 | 14.6 |
| | 3 | 2 3/4 | 1 1/32 | 1 7/8 | 6 9/16 | 5 15/16 | 4 3/8 | 8 13/32 | 5 13/32 | 19/16 | 4 3/4 | 1 5/8 | 1 1/4 | 2 3/4 | 3.063 | 1.331 | UCTX15 | | UCX15 | 8.7 | | | |
| | 3 | 2 3/4 | 1 1/32 | 1 7/8 | 6 9/16 | 5 15/16 | 4 3/8 | 8 13/32 | 5 13/32 | 19/16 | 4 3/4 | 1 5/8 | 1 1/4 | 2 3/4 | 3.063 | 1.331 | UCTX15-48 | | UCX15-48 | 8.7 | | | |

Tipo Tensor

UCT

Agujero cilíndrico (con tornillo fijador)

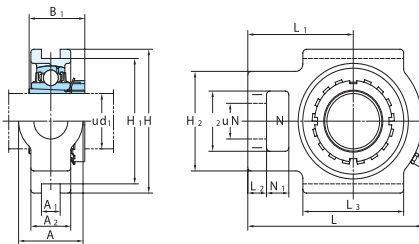
d (75) ~ 140 mm



| Diámetro Eje mm pulg | Dimensiones pulg. mm | | | | | | | | | | | | | | | | Estándar | | | Capacidad Carga Básica kN | | Factor f_0 |
|----------------------------|----------------------------|-------------|-------------|-------------|--------------|--------------|-------------|--------------|--------------|-------------|-------------|-------------|-------------|-------------|------------|-------------------------------------|-----------------|----------------------|--------------|------------------------------|----------|--------------|
| | A | A1 | A2 | H | H1 | H2 | L | L1 | L2 | L3 | N | N1 | N2 | B | S | No. Unidad | No. Alojamiento | No. Inserto | Masa kg | C_r | C_{0r} | |
| 75 | $2^{15}/16$ | $3^{17}/32$ | $1^{1}/32$ | $2^{5}/32$ | $8^{1}/2$ | $7^{9}/16$ | $5^{3}/16$ | $10^{5}/16$ | $6^{5}/16$ | $3^{1}/32$ | $5^{29}/32$ | $1^{13}/16$ | $1^{13}/32$ | $3^{11}/32$ | $3^{22}/8$ | UCT315-47 UCT315 | T315 | UC315-47 UC315 | 13.0 13.0 | 113 | 77.2 | 13.2 |
| | $3^{1}/8$ | $2^{3}/4$ | $1^{1}/32$ | 2 | $7^{1}/4$ | $6^{1}/2$ | $4^{3}/8$ | $9^{1}/4$ | $5^{1}/2$ | $1^{3}/16$ | $4^{3}/4$ | $1^{5}/8$ | $1^{1}/4$ | $2^{3}/4$ | $3^{25}/2$ | UCT315-48 UCT315-50 UCT315-48 | T216 | UC216-50 UC216 | 8.2 8.2 | 72.7 | 53.0 | 14.6 |
| | 80 | — | $2^{7}/8$ | $1^{7}/64$ | $2^{1}/8$ | $7^{25}/32$ | $6^{19}/16$ | $4^{7}/8$ | $10^{1}/4$ | $6^{3}/8$ | $1^{3}/32$ | $6^{3}/16$ | $1^{7}/8$ | $1^{1}/2$ | $2^{7}/8$ | $3^{37}/4$ | UCTX16 | TX16 | UCX16 | 11.7 | 84.0 | 61.9 |
| 85 | — | $4^{1}/32$ | $2^{3}/8$ | $2^{3}/8$ | $9^{1}/16$ | $8^{1}/32$ | $5^{29}/32$ | $11^{3}/32$ | $6^{27}/32$ | $1^{3}/32$ | $6^{5}/16$ | $2^{3}/32$ | $1^{21}/32$ | $3^{27}/32$ | $3^{38}/6$ | UCT316 | T316 | UC316 | 16.2 | 123 | 86.7 | 13.3 |
| | $3^{1}/4$ | $2^{1}/8$ | $1^{1}/16$ | $2^{1}/8$ | $7^{5}/32$ | $6^{13}/16$ | $4^{7}/8$ | $10^{1}/4$ | $6^{3}/8$ | $1^{5}/32$ | $6^{3}/16$ | $1^{7}/8$ | $1^{1}/2$ | $2^{7}/8$ | $3^{37}/4$ | UCT217-52 | T217 | UC217-52 | 11.0 | 84.0 | 61.9 | 14.5 |
| | — | $2^{7}/8$ | $1^{7}/64$ | $2^{1}/8$ | $7^{25}/32$ | $6^{13}/16$ | $4^{7}/8$ | $10^{1}/4$ | $6^{3}/8$ | $1^{3}/32$ | $6^{3}/16$ | $1^{7}/8$ | $1^{1}/2$ | $2^{7}/8$ | $3^{78}/0$ | UCTX17 | TX17 | UCX17 | 11.7 | 96.1 | 71.5 | 14.5 |
| 90 | — | $4^{1}/32$ | $1^{7}/64$ | $2^{17}/32$ | $9^{1}/16$ | $8^{27}/64$ | $5^{31}/32$ | $11^{23}/32$ | $7^{1}/32$ | $1^{3}/16$ | $6^{11}/16$ | $2^{3}/32$ | $1^{21}/32$ | $3^{27}/32$ | $3^{78}/0$ | UCT317 | T317 | UC317 | 19.0 | 133 | 96.8 | 13.3 |
| | $3^{1}/2$ | $4^{11}/32$ | $1^{7}/64$ | $2^{19}/32$ | $10^{1}/32$ | $8^{31}/32$ | $6^{5}/16$ | $12^{9}/32$ | $7^{9}/16$ | $1^{3}/16$ | $6^{7}/8$ | $2^{1}/4$ | $1^{13}/16$ | $4^{3}/16$ | $3^{78}/0$ | UCT318-56 | T318 | UC318-56 | 21.6 | 143 | 107 | 13.3 |
| | — | $4^{11}/32$ | $1^{3}/8$ | $2^{27}/32$ | $10^{5}/8$ | $9^{29}/64$ | $6^{1}/2$ | $12^{11}/16$ | $7^{3}/4$ | $1^{7}/32$ | $7^{3}/32$ | $2^{1}/4$ | $1^{13}/16$ | $4^{3}/16$ | 4^{055} | UCT318 | T318 | UC318 | 21.6 | 153 | 119 | 13.3 |
| 100 | — | 110 | 35 | 72 | 270 | 240 | 165 | 322 | 197 | 31 | 180 | 57 | 46 | 106 | 103 | UCT319 | T319 | UC319 | 24.9 | 153 | 119 | 13.3 |
| | $3^{15}/16$ | $4^{29}/32$ | $1^{3}/8$ | $2^{15}/16$ | $11^{13}/32$ | $10^{15}/64$ | $6^{7}/8$ | $13^{19}/32$ | $8^{9}/32$ | $1^{1}/4$ | $7^{7}/8$ | $2^{5}/16$ | $1^{7}/8$ | $4^{17}/32$ | 4^{252} | UCT320 | T320 | UC320 | 30.7 | 173 | 141 | 13.2 |
| | 4 | 120 | 35 | 75 | 290 | 260 | 175 | 345 | 210 | 32 | 200 | 59 | 48 | 115 | 108 | UCT320-63 UCT320-64 | T320 | UC320-63 UC320-64 | 30.7 30.7 | 173 | 141 | 13.2 |
| 105 | — | $4^{29}/32$ | $1^{3}/8$ | $2^{15}/16$ | $11^{13}/32$ | $10^{15}/64$ | $6^{7}/8$ | $13^{19}/32$ | $8^{9}/32$ | $1^{1}/4$ | $7^{7}/8$ | $2^{5}/16$ | $1^{7}/8$ | $4^{17}/32$ | 4^{409} | UCT321 | T321 | UC321 | 36.7 | 184 | 153 | 13.2 |
| | — | 120 | 35 | 75 | 290 | 260 | 175 | 345 | 210 | 32 | 200 | 59 | 48 | 115 | 112 | UCT322 | T322 | UC322 | 39.7 | 205 | 180 | 13.2 |
| | — | 130 | 38 | 80 | 320 | 285 | 185 | 385 | 235 | 38 | 215 | 65 | 52 | 125 | 117 | UCT324 | T324 | UC324 | 54.4 | 207 | 185 | 13.5 |
| 120 | — | $5^{1}/2$ | $1^{49}/64$ | $3^{17}/32$ | $13^{31}/32$ | $12^{9}/32$ | $8^{9}/32$ | 17 | $10^{1}/2$ | $1^{21}/32$ | $9^{1}/16$ | $2^{3}/4$ | $2^{3}/8$ | $5^{1}/2$ | 2^{008} | UCT326 | T326 | UC326 | 69.3 | 229 | 214 | 13.6 |
| | — | 140 | 45 | 90 | 355 | 320 | 210 | 432 | 267 | 42 | 230 | 70 | 60 | 140 | 126 | UCT328 | T328 | UC328 | 85.1 | 253 | 246 | 13.6 |
| | — | 150 | 50 | 100 | 385 | 350 | 220 | 465 | 285 | 45 | 240 | 75 | 65 | 150 | 135 | UCT324 | T324 | UC324 | 54.4 | 207 | 185 | 13.5 |
| 130 | — | $5^{29}/32$ | $1^{3}/32$ | $3^{15}/16$ | $15^{5}/32$ | $13^{25}/32$ | $8^{21}/32$ | $18^{5}/16$ | $11^{7}/32$ | $1^{25}/32$ | $9^{7}/16$ | $2^{15}/16$ | $2^{9}/16$ | $5^{29}/32$ | 2.126 | UCT326 | T326 | UC326 | 69.3 | 229 | 214 | 13.6 |
| | — | $6^{3}/32$ | $1^{3}/32$ | $3^{15}/16$ | $16^{11}/32$ | $14^{61}/64$ | $9^{1}/16$ | $20^{9}/32$ | $12^{13}/32$ | $1^{31}/32$ | $10^{1}/32$ | $3^{3}/32$ | $2^{3}/4$ | $6^{5}/16$ | 5.709 | UCT328 | T328 | UC328 | 85.1 | 253 | 246 | 13.6 |
| | — | 155 | 50 | 100 | 415 | 380 | 230 | 515 | 315 | 50 | 255 | 80 | 70 | 160 | 145 | UCT328 | T328 | UC328 | 85.1 | 253 | 246 | 13.6 |

Tipo Tensor

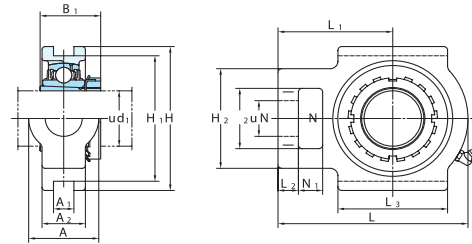
UKT
 Agujero cónico (con kit de montaje)
 d₁ 20 ~ (50) mm



| d ₁ | Dimensiones pulg. | | | | | | | | | | | | | | | | | | | Estándar | | | | Capacidad Carga Básica | | Factor f ₀ |
|----------------|-------------------|----------------|----------------|-------|----------------|----------------|-------|----------------|----------------|----------------|-------|----------------|----------------|-------------------------------|-----------------|-------------|-----------------|---------|-------------------|--------------------|------|--|--|------------------------|--|-----------------------|
| | A | A ₁ | A ₂ | H | H ₁ | H ₂ | L | L ₁ | L ₂ | L ₃ | N | N ₁ | N ₂ | B ₁ ⁽¹⁾ | No. Alojamiento | No. Inserto | Kit de Montaje | Masa kg | C _r kN | C _{0r} kN | | | | | | |
| 20 | 3/4 | 1 1/4 | 1 1/2 | 3 1/2 | 2 3/4 | 2 1/2 | 3 1/2 | 2 7/16 | 1 3/2 | 2 | 3/4 | 5/8 | 1 1/4 | 1 5/32(1 3/8) | UKT205 | UK205 | HE305X(HE2305X) | 0.88 | 14.0 | 7.85 | 13.9 | | | | | |
| | 3/4 | 1 1/2 | 1 3/2 | 4 1/2 | 3 1/2 | 2 7/2 | 4 1/2 | 2 7/2 | 2 1/4 | 1 3/2 | 2 1/4 | 7/8 | 5/8 | 1 1/2 | UKT205 | UKX05 | HE2305X | 1.3 | 19.5 | 11.3 | 13.9 | | | | | |
| | 3/4 | 1 1/2 | 1 3/2 | 3 1/2 | 3 1/2 | 2 7/2 | 4 1/2 | 3 1/2 | 2 7/2 | 2 1/4 | 1 3/2 | 2 1/4 | 5/8 | 1 1/2 | UKT305 | UK305 | HE2305X | 1.5 | 21.2 | 10.9 | 12.6 | | | | | |
| | 1 | 1 1/2 | 1 3/2 | 4 1/2 | 3 1/2 | 2 7/2 | 4 1/2 | 2 7/2 | 2 1/4 | 1 3/2 | 2 1/4 | 7/8 | 5/8 | 1 1/2 | UKT206 | UK206 | H306X(H2306X) | 1.3 | 19.5 | 11.3 | 13.9 | | | | | |
| 25 | 1 | 1 1/2 | 1 3/2 | 4 1/2 | 3 1/2 | 2 7/2 | 4 1/2 | 2 7/2 | 2 1/4 | 1 3/2 | 2 1/4 | 7/8 | 5/8 | 1 1/2 | UKTX06 | UKX06 | HE2306X | 1.7 | 25.7 | 15.4 | 13.9 | | | | | |
| | 1 | 1 1/2 | 1 3/2 | 4 1/2 | 3 1/2 | 2 7/2 | 4 1/2 | 2 7/2 | 2 1/4 | 1 3/2 | 2 1/4 | 7/8 | 5/8 | 1 1/2 | UKT306 | UK306 | HE2306X | 1.9 | 26.7 | 15.0 | 13.3 | | | | | |
| | 1 1/8 | 1 1/2 | 1 3/2 | 4 1/2 | 3 1/2 | 2 7/2 | 4 1/2 | 2 7/2 | 2 1/4 | 1 3/2 | 2 1/4 | 7/8 | 5/8 | 1 1/2 | UKT207 | UK207 | H307X(H2307X) | 1.7 | 25.7 | 15.4 | 13.9 | | | | | |
| | 1 1/8 | 1 1/2 | 1 3/2 | 4 1/2 | 3 1/2 | 2 7/2 | 4 1/2 | 2 7/2 | 2 1/4 | 1 3/2 | 2 1/4 | 7/8 | 5/8 | 1 1/2 | UKTX07 | UKX07 | H307X(H2307X) | 2.6 | 29.1 | 17.8 | 14.0 | | | | | |
| 30 | 1 1/8 | 1 1/2 | 1 3/2 | 4 1/2 | 3 1/2 | 2 7/2 | 4 1/2 | 2 7/2 | 2 1/4 | 1 3/2 | 2 1/4 | 7/8 | 5/8 | 1 1/2 | UKT307 | UK307 | HE2307X | 2.4 | 33.4 | 19.3 | 13.2 | | | | | |
| | 1 1/4 | 1 1/2 | 1 3/2 | 4 1/2 | 3 1/2 | 2 7/2 | 4 1/2 | 2 7/2 | 2 1/4 | 1 3/2 | 2 1/4 | 7/8 | 5/8 | 1 1/2 | UKT208 | UK208 | H308X(HE2308X) | 2.5 | 29.1 | 17.8 | 14.0 | | | | | |
| | 1 3/8 | 1 1/2 | 1 3/2 | 4 1/2 | 3 1/2 | 2 7/2 | 4 1/2 | 2 7/2 | 2 1/4 | 1 3/2 | 2 1/4 | 7/8 | 5/8 | 1 1/2 | UKTX08 | UKX08 | HE2308X | 2.6 | 34.1 | 21.3 | 14.0 | | | | | |
| | 1 1/4 | 1 1/2 | 1 3/2 | 4 1/2 | 3 1/2 | 2 7/2 | 4 1/2 | 2 7/2 | 2 1/4 | 1 3/2 | 2 1/4 | 7/8 | 5/8 | 1 1/2 | UKT308 | UK308 | HE2308X | 3.0 | 40.7 | 24.0 | 13.2 | | | | | |
| 35 | 1 1/2 | 1 1/2 | 1 3/2 | 4 1/2 | 3 1/2 | 2 7/2 | 4 1/2 | 2 7/2 | 2 1/4 | 1 3/2 | 2 1/4 | 7/8 | 5/8 | 1 1/2 | UKT209 | UK209 | H309X(HE2309X) | 2.5 | 34.1 | 21.3 | 14.0 | | | | | |
| | 1 3/8 | 1 1/2 | 1 3/2 | 4 1/2 | 3 1/2 | 2 7/2 | 4 1/2 | 2 7/2 | 2 1/4 | 1 3/2 | 2 1/4 | 7/8 | 5/8 | 1 1/2 | UKTX09 | UKX09 | HE2309X | 2.9 | 35.1 | 23.3 | 14.4 | | | | | |
| | 1 1/2 | 1 1/2 | 1 3/2 | 4 1/2 | 3 1/2 | 2 7/2 | 4 1/2 | 2 7/2 | 2 1/4 | 1 3/2 | 2 1/4 | 7/8 | 5/8 | 1 1/2 | UKT309 | UK309 | HE2309X | 4.2 | 48.9 | 29.5 | 13.3 | | | | | |
| | 1 3/8 | 1 1/2 | 1 3/2 | 4 1/2 | 3 1/2 | 2 7/2 | 4 1/2 | 2 7/2 | 2 1/4 | 1 3/2 | 2 1/4 | 7/8 | 5/8 | 1 1/2 | UKT210 | UK210 | H310X(HE2310X) | 2.7 | 35.1 | 23.3 | 14.4 | | | | | |
| 40 | 1 3/4 | 1 1/2 | 1 3/2 | 4 1/2 | 3 1/2 | 2 7/2 | 4 1/2 | 2 7/2 | 2 1/4 | 1 3/2 | 2 1/4 | 7/8 | 5/8 | 1 1/2 | UKTX10 | UKX10 | HE2310X | 4.4 | 43.4 | 29.4 | 14.4 | | | | | |
| | 1 1/2 | 1 1/2 | 1 3/2 | 4 1/2 | 3 1/2 | 2 7/2 | 4 1/2 | 2 7/2 | 2 1/4 | 1 3/2 | 2 1/4 | 7/8 | 5/8 | 1 1/2 | UKT310 | UK310 | HE2310X | 5.0 | 62.0 | 38.3 | 13.2 | | | | | |
| | 1 3/4 | 1 1/2 | 1 3/2 | 4 1/2 | 3 1/2 | 2 7/2 | 4 1/2 | 2 7/2 | 2 1/4 | 1 3/2 | 2 1/4 | 7/8 | 5/8 | 1 1/2 | UKT211 | UK211 | H311X(HE2311X) | 4.1 | 43.4 | 29.4 | 14.4 | | | | | |
| | 1 3/4 | 1 1/2 | 1 3/2 | 4 1/2 | 3 1/2 | 2 7/2 | 4 1/2 | 2 7/2 | 2 1/4 | 1 3/2 | 2 1/4 | 7/8 | 5/8 | 1 1/2 | UKTX10 | UKX10 | HE2310X | 4.4 | 43.4 | 29.4 | 14.4 | | | | | |
| 45 | 1 3/4 | 1 1/2 | 1 3/2 | 4 1/2 | 3 1/2 | 2 7/2 | 4 1/2 | 2 7/2 | 2 1/4 | 1 3/2 | 2 1/4 | 7/8 | 5/8 | 1 1/2 | UKT310 | UK310 | HE2310X | 5.0 | 62.0 | 38.3 | 13.2 | | | | | |
| | 1 3/4 | 1 1/2 | 1 3/2 | 4 1/2 | 3 1/2 | 2 7/2 | 4 1/2 | 2 7/2 | 2 1/4 | 1 3/2 | 2 1/4 | 7/8 | 5/8 | 1 1/2 | UKT211 | UK211 | H311X(HE2311X) | 4.1 | 43.4 | 29.4 | 14.4 | | | | | |
| | 1 3/4 | 1 1/2 | 1 3/2 | 4 1/2 | 3 1/2 | 2 7/2 | 4 1/2 | 2 7/2 | 2 1/4 | 1 3/2 | 2 1/4 | 7/8 | 5/8 | 1 1/2 | UKTX10 | UKX10 | HE2310X | 4.4 | 43.4 | 29.4 | 14.4 | | | | | |
| | 1 3/4 | 1 1/2 | 1 3/2 | 4 1/2 | 3 1/2 | 2 7/2 | 4 1/2 | 2 7/2 | 2 1/4 | 1 3/2 | 2 1/4 | 7/8 | 5/8 | 1 1/2 | UKT310 | UK310 | HE2310X | 5.0 | 62.0 | 38.3 | 13.2 | | | | | |
| 50 | 1 3/4 | 1 1/2 | 1 3/2 | 4 1/2 | 3 1/2 | 2 7/2 | 4 1/2 | 2 7/2 | 2 1/4 | 1 3/2 | 2 1/4 | 7/8 | 5/8 | 1 1/2 | UKT211 | UK211 | H311X(HE2311X) | 4.1 | 43.4 | 29.4 | 14.4 | | | | | |
| | 1 3/4 | 1 1/2 | 1 3/2 | 4 1/2 | 3 1/2 | 2 7/2 | 4 1/2 | 2 7/2 | 2 1/4 | 1 3/2 | 2 1/4 | 7/8 | 5/8 | 1 1/2 | UKTX10 | UKX10 | HE2310X | 4.4 | 43.4 | 29.4 | 14.4 | | | | | |
| | 1 3/4 | 1 1/2 | 1 3/2 | 4 1/2 | 3 1/2 | 2 7/2 | 4 1/2 | 2 7/2 | 2 1/4 | 1 3/2 | 2 1/4 | 7/8 | 5/8 | 1 1/2 | UKT310 | UK310 | HE2310X | 5.0 | 62.0 | 38.3 | 13.2 | | | | | |
| | 1 3/4 | 1 1/2 | 1 3/2 | 4 1/2 | 3 1/2 | 2 7/2 | 4 1/2 | 2 7/2 | 2 1/4 | 1 3/2 | 2 1/4 | 7/8 | 5/8 | 1 1/2 | UKT211 | UK211 | H311X(HE2311X) | 4.1 | 43.4 | 29.4 | 14.4 | | | | | |

Tipo Tensor

UKT Agujero cónico (con kit de montaje) $d_1(50) \sim 100$ mm



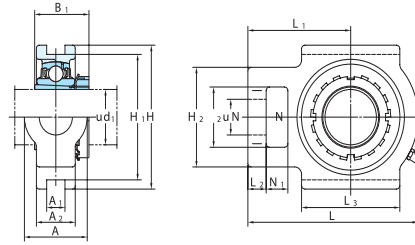
| Diámetro Eje mm d_1 | Dimensiones pulg. mm | | | | | | | | | | | | | | | | Estandar | | | | Capacidad Carga Básica kN | | Factor f_0 |
|-----------------------------|----------------------|----------------|----------------|---------|----------------|----------------|---------|----------------|----------------|----------------|---------|----------------|----------------|------------------------------|-----------------|-----------------|-------------|----------------|----------------------------------|----------------|---------------------------|------|--------------|
| | A | A ₁ | A ₂ | H | H ₁ | H ₂ | L | L ₁ | L ₂ | L ₃ | N | N ₁ | N ₂ | B ₁ ¹⁾ | No. Unidad | No. Alojamiento | No. Inserto | Kit de Montaje | Masa kg | C _r | C _{or} | | |
| 50 | 1 7/8 | 2 17/32 | 55/64 | 1 29/32 | 5 3/4 | 5 1/8 | 4 1/32 | 7 5/8 | 4 11/16 | 3/4 | 4 1/32 | 1 3/8 | 1 1/4 | 2 17/32 | 2 5/16 | UKTX11 | TX11 | UKX11 | HS2311X HE2311X HE2311X | 5.1 | 52.4 | 36.2 | 14.4 |
| | 2 | 2 19/32 | 55/64 | 1 29/32 | 6 13/32 | 5 29/32 | 4 1/8 | 8 5/32 | 5 | 13/16 | 4 17/32 | 1 17/32 | 1 5/32 | 2 19/32 | 2 5/16 | UKT311 | T311 | UK311 | HS2311X HE2311X | 6.4 | 71.6 | 45.0 | 13.2 |
| 55 | 2 1/8 | 2 17/32 | 55/64 | 1 21/32 | 5 3/4 | 5 1/8 | 4 1/32 | 7 5/8 | 4 11/16 | 3/4 | 4 1/32 | 1 3/8 | 1 1/4 | 2 17/32 | 1 27/32(2 1/16) | UKT212 | T212 | UK212 | HS312X(HS2312X) H312X(H2313X) | 4.8 | 52.4 | 36.2 | 14.4 |
| | 2 1/8 | 2 3/4 | 1 1/32 | 1 7/8 | 6 9/16 | 5 15/16 | 4 3/8 | 8 13/16 | 5 13/32 | 13/16 | 4 3/4 | 1 5/8 | 1 1/4 | 2 3/4 | 2 7/8 | UKTX12 | TX12 | UKX12 | HS2312X HE2312X | 7.3 | 57.2 | 40.1 | 14.4 |
| 60 | 2 1/8 | 2 25/32 | 55/64 | 1 13/16 | 7 | 6 19/64 | 4 7/16 | 8 21/32 | 5 5/16 | 29/32 | 4 27/32 | 1 5/8 | 1 7/32 | 2 25/32 | 2 7/8 | UKT312 | T312 | UK312 | HS2312X HE2312X | 7.5 | 81.9 | 52.2 | 13.2 |
| | 2 1/4 | 2 3/4 | 1 1/32 | 1 29/32 | 6 9/16 | 5 15/16 | 4 3/8 | 8 13/16 | 5 13/32 | 13/16 | 4 3/4 | 1 5/8 | 1 1/4 | 2 3/4 | 1 31/32(2 9/16) | UKT213 | T213 | UK213 | HE313X(HE2313X) H313X(H2313X) | 6.8 | 57.2 | 40.1 | 14.4 |
| 65 | 2 3/8 | 2 1/4 | 2 26 | 48 | 167 | 151 | 111 | 224 | 137 | 21 | 121 | 41 | 32 | 70 | 50(65) | UKTX13 | TX13 | UKX13 | HE2313X HE2313X | 7.2 | 62.2 | 44.1 | 14.5 |
| | 2 1/4 | 2 1/4 | 1 1/32 | 1 7/8 | 6 9/16 | 5 15/16 | 4 3/8 | 8 13/16 | 5 13/32 | 13/16 | 4 3/4 | 1 5/8 | 1 1/4 | 2 3/4 | 2 9/16 | UKT313 | T313 | UK313 | HE2313X HE2313X | 9.4 | 92.7 | 59.9 | 13.2 |
| 70 | 2 1/2 | 2 3/4 | 1 1/32 | 1 31/32 | 7 15/32 | 6 11/16 | 4 9/16 | 9 3/8 | 5 3/4 | 31/32 | 5 9/32 | 1 11/16 | 1 1/4 | 2 3/4 | 2 9/16 | UKT215 | T215 | UK215 | HE315X(HE2315X) H315X(H2315X) | 7.4 | 67.4 | 48.3 | 14.5 |
| | 2 1/2 | 2 3/4 | 1 1/32 | 1 13/16 | 6 9/16 | 5 15/16 | 4 3/8 | 8 13/16 | 5 13/32 | 13/16 | 4 3/4 | 1 5/8 | 1 1/4 | 2 3/4 | 2 5/32(2 7/8) | UKTX15 | TX15 | UKX15 | HE2315X HE2315X | 8.4 | 72.7 | 53.0 | 14.6 |
| 75 | 2 3/4 | 2 3/4 | 1 1/32 | 1 31/32 | 8 1/2 | 7 9/16 | 5 3/8 | 10 5/16 | 6 5/16 | 31/32 | 5 29/32 | 1 13/16 | 1 1/2 | 2 7/8 | 3 1/16 | UKT315 | T315 | UK315 | HE315X(HE2315X) H315X(H2315X) | 13.1 | 113 | 77.2 | 13.2 |
| | 2 3/4 | 2 3/4 | 1 1/32 | 1 31/32 | 8 1/2 | 7 9/16 | 5 3/8 | 10 5/16 | 6 5/16 | 31/32 | 5 29/32 | 1 13/16 | 1 1/2 | 2 7/8 | 3 1/16 | UKT216 | T216 | UK216 | HE316X(HE2316X) H316X(H2316X) | 8.5 | 72.7 | 53.0 | 14.6 |
| 80 | 3 | 2 7/8 | 1 7/64 | 2 1/8 | 7 25/32 | 6 13/16 | 4 7/8 | 10 1/4 | 5 1/2 | 13/16 | 4 3/4 | 1 5/8 | 1 1/4 | 2 3/4 | 2 5/16(3 1/32) | UKTX16 | TX16 | UKX16 | HE2316X HE2316X | 11.8 | 84.0 | 61.9 | 14.5 |
| | 3 | 2 7/8 | 1 7/64 | 2 1/8 | 7 25/32 | 6 13/16 | 4 7/8 | 10 1/4 | 5 1/2 | 13/16 | 4 3/4 | 1 5/8 | 1 1/4 | 2 3/4 | 2 5/16(3 1/32) | UKT316 | T316 | UK316 | HE2316X HE2316X | 16.3 | 123 | 86.7 | 13.3 |
| 85 | 3 1/4 | 3 1/4 | 1 1/32 | 1 31/32 | 8 1/2 | 7 9/16 | 5 3/8 | 10 5/16 | 6 5/16 | 31/32 | 5 29/32 | 1 13/16 | 1 1/2 | 2 7/8 | 3 1/16 | UKT217 | T217 | UK217 | H317X(H2317X) HE317X(HE2317X) | 11.2 | 84.0 | 61.9 | 14.5 |
| | 3 1/4 | 3 1/4 | 1 1/32 | 1 31/32 | 8 1/2 | 7 9/16 | 5 3/8 | 10 5/16 | 6 5/16 | 31/32 | 5 29/32 | 1 13/16 | 1 1/2 | 2 7/8 | 3 1/16 | UKTX17 | TX17 | UKX17 | HE2317X HE2317X | 11.4 | 96.1 | 71.5 | 14.5 |
| 90 | 3 1/2 | 3 1/2 | 1 1/32 | 1 31/32 | 9 7/16 | 8 27/64 | 5 31/32 | 11 23/32 | 7 7/32 | 1 3/16 | 6 11/16 | 2 3/32 | 1 27/32 | 3 27/32 | 3 1/32 | UKT317 | T317 | UK317 | HE2317X HE2317X | 18.9 | 133 | 96.8 | 13.3 |
| | 3 1/2 | 3 1/2 | 1 1/32 | 1 31/32 | 9 7/16 | 8 27/64 | 5 31/32 | 11 23/32 | 7 7/32 | 1 3/16 | 6 11/16 | 2 3/32 | 1 27/32 | 3 27/32 | 3 1/32 | UKT318 | T318 | UK318 | HE2318X | 21.7 | 143 | 107 | 13.3 |
| 100 | 4 | 4 11/32 | 1 1/64 | 2 1/8 | 10 1/2 | 9 29/64 | 6 1/2 | 12 11/16 | 7 3/4 | 1 7/32 | 7 3/32 | 2 1/4 | 1 13/16 | 4 3/16 | 3 7/8 | UKT319 | T319 | UK319 | HE2319X HE2320X | 25.2 | 153 | 119 | 13.3 |
| | 4 | 4 23/32 | 1 1/64 | 2 1/8 | 10 1/2 | 9 29/64 | 6 1/2 | 12 11/16 | 7 3/4 | 1 7/32 | 7 3/32 | 2 1/4 | 1 13/16 | 4 3/16 | 3 13/16 | UKT320 | T320 | UK320 | HE2320X HE2322X | 30.4 | 173 | 141 | 13.2 |
| | 4 | 4 13/32 | 1 1/64 | 2 1/8 | 10 1/2 | 9 29/64 | 6 1/2 | 12 11/16 | 7 3/4 | 1 7/32 | 7 3/32 | 2 1/4 | 1 13/16 | 4 3/16 | 4 1/8 | UKT322 | T322 | UK322 | HE2322X | 39.5 | 205 | 180 | 13.2 |

Tipo Tensor

UKT

Agujero cónico (con kit de montaje)

d_1 110 ~ 125 mm



| Diámetro Eje mm pulg | Dimensiones pulg. mm | | | | | | | | | | | | | | | | Factor | | | | | |
|-------------------------|----------------------------|----------------|----------------|----------|----------------|----------------|---------|----------------|----------------|----------------|---------|----------------|----------------|------------------------------|------------|--------------------------|--------|-----------------|----------------|---------|---------------------------|----------------|
| | A | A ₁ | A ₂ | H | H ₁ | H ₂ | L | L ₁ | L ₂ | L ₃ | N | N ₁ | N ₂ | B ₁ ¹⁾ | No. Unidad | Estándar No. Alojamiento | | No. Inserto | Kit de Montaje | Masa kg | Capacidad Carga Básica kN | C _r |
| 110 | 5 1/2 | 1 49/64 | 3 1/32 | 13 31/32 | 12 9/32 | 8 9/32 | 17 | 10 1/2 | 1 21/32 | 9 1/16 | 2 3/4 | 2 3/8 | 5 1/2 | 4 13/32 | UKT324 | T324 | UK324 | H2324 | 54.7 | 207 | 185 | 13.5 |
| 115 | 4 1/2 | 5 29/32 | 1 31/32 | 3 15/16 | 13 25/32 | 8 21/32 | 18 5/16 | 11 7/32 | 1 25/32 | 9 7/16 | 2 15/16 | 2 9/16 | 5 29/32 | 4 3/4 | UKT326 | T326 | UK326 | HE2326 H2326 | 69.1 69.1 | 229 | 214 | 13.6 |
| 125 | — | 6 3/32 | 1 31/32 | 3 15/16 | 16 11/32 | 14 61/64 | 20 9/32 | 12 39/32 | 1 31/32 | 10 1/32 | 3 5/32 | 2 3/4 | 6 5/16 | 5 5/32 | UKT328 | T328 | UK328 | H2328 | 85.1 | 253 | 246 | 13.6 |